

# Water Sharing Plan for the Macleay Unregulated and Alluvial Water Sources 2016

[2016-385]



New South Wales

## Status information

### Currency of version

Current version for 6 January 2017 to date (accessed 17 February 2020 at 14:37)

Legislation on this site is usually updated within 3 working days after a change to the legislation.

### Provisions in force

The provisions displayed in this version of the legislation have all commenced. See [Historical Notes](#)

### Note:

This Plan ceases to have effect on 30.6.2026—see cl 3.

### Authorisation

This version of the legislation is compiled and maintained in a database of legislation by the Parliamentary Counsel's Office and published on the NSW legislation website, and is certified as the form of that legislation that is correct under section 45C of the [Interpretation Act 1987](#).

File last modified 6 January 2017.

# Water Sharing Plan for the Macleay Unregulated and Alluvial Water Sources 2016

[2016-385]



New South Wales

## Contents

<b>Part 1 Introduction</b>	7
Note	7
1 Name of Plan	7
2 Nature and status of Plan	7
3 Commencement	7
4 Application of Plan	7
5 Management zones	10
6 Extraction management unit for these water sources	10
7 Understanding the rules in this Plan	11
8 Interpretation	11
<b>Part 2 Vision, objectives, strategies and performance indicators</b>	12
Note	12
9 Vision statement	12
10 Acknowledgement	12
11 Objectives	12
12 Strategies	13
13 Performance indicators	13
<b>Part 3 Bulk access regime</b>	14
14 Bulk access regime	14
15 Climatic variability	14
<b>Part 4 Planned environmental water provisions</b>	15
Notes	15
16 General	15
17 Commitment and identification of planned environmental water	15
18 Establishment and maintenance of planned environmental water	15

<b>Part 5 Requirements for water</b>	17
<b>Division 1 General</b>	17
19 Application	17
<b>Division 2 Requirements for water for basic landholder rights</b>	17
20 Domestic and stock rights	17
21 Native title rights	19
22 Harvestable rights	19
<b>Division 3 Requirements for water for extraction under access licences</b>	19
23 Share components of domestic and stock access licences	19
24 Share components of local water utility access licences	20
25 Share components of unregulated river access licences	21
26 Share components of unregulated river (high flow) access licences	22
27 Share components of aquifer access licences	22
<b>Part 6 System Operations Rules</b>	22
Note	22
28 Releases in the Malpas Dam Water Source	22
<b>Part 7 Limits to the availability of water</b>	23
Note	23
<b>Division 1 Long-term average annual extraction limits</b>	23
29 General	23
30 Volume of the long-term average annual extraction limits	23
31 Calculation of current levels of annual extraction	24
32 Assessment of average annual extractions against long-term average annual extraction limits	24
33 Compliance with the long-term average annual extraction limit for the EMU	24
34 Compliance with the long-term average annual extraction limit for the Coastal Macleay Floodplain Alluvial Groundwater Source	24
<b>Division 2 Available water determinations</b>	25
35 General	25
36 Available water determinations for these connected water sources, excluding the Apsley River Water Source, the Commissioners Waters Water Source and the Toorumbbee Creek Water Source, made at the commencement of this Plan	26
37 Available water determinations for these connected water sources, excluding the Apsley River Water Source, the Commissioners Waters Water Source and the Toorumbbee Creek Water Source, after the first water year of this Plan	26
38 Available water determinations for the Apsley River Water Source, the Commissioners Waters Water Source and the Toorumbbee Creek Water Source	26
39 Available water determinations for the Coastal Macleay Floodplain Alluvial Groundwater Source	27

<b>Part 8 Rules for granting access licences</b>	28
Notes	28
40 Specific purpose access licences	28
41 Granting of access licences as a result of controlled allocation	29
<b>Part 9 Rules for managing access licences</b>	29
Notes	29
<b>Division 1 Water allocation account management rules</b>	29
42 Individual access licence account management rules for these connected water sources, excluding the Apsley River Source, the Commissioners Waters Water Source and the Toorumbbee Creek Water Source	29
43 Individual access licence account management rules for the Apsley River Water Source, the Commissioners Water Source and the Toorumbbee Creek Water Source	31
44 Individual access licence account management rules for the Coastal Macleay Floodplain Alluvial Groundwater Source	33
<b>Division 2 Flow classes and daily access rules</b>	33
45 General	33
46 Flow classes	33
47 Access rules for the taking of surface water	39
48 Access rules for the taking of groundwater in the Macleay Valley Water Source	44
49 Total daily extraction limits	45
50 Individual daily extraction limits	45
<b>Part 10 Rules for water supply work approvals</b>	45
Notes	45
<b>Division 1 Rules applying to the granting or amending of water supply work approvals for water supply works that take surface water</b>	45
51 General	45
52 Granting or amending water supply work approvals	46
<b>Division 2 Rules applying to the granting or amending of water supply work approvals for water supply works that take groundwater</b>	47
53 General	47
54 Rules to minimise interference between water supply works	47
55 Rules for water supply works located near contamination sources	48
56 Rules for water supply works located near groundwater-dependent ecosystems	48
57 Rules for water supply works located near potential acid sulfate soils	50
58 Rules for water supply works located near groundwater-dependent culturally significant sites	50

59 Replacement groundwater works .....	51
<b>Division 3 Rules for the use of water supply works used to take groundwater .....</b>	<b>52</b>
60 Rules for the use of water supply works located within restricted distances .....	52
<b>Part 11 Access licence dealing rules .....</b>	<b>54</b>
61 General .....	54
62 Conversion of access licence to new category .....	54
63 Assignments of rights dealings .....	55
64 Amendment of share components dealings (change of water source) .....	60
65 Amendment of extraction component dealings .....	64
66 Assignment of water allocations dealings .....	64
67 Interstate access licence transfer and assignment of water allocation .....	70
68 Nomination of water supply works dealings .....	70
<b>Part 12 Mandatory conditions .....</b>	<b>71</b>
Note .....	71
<b>Division 1 General .....</b>	<b>71</b>
69 General .....	71
<b>Division 2 Access licences .....</b>	<b>71</b>
Note .....	71
70 General .....	71
<b>Division 3 Water supply work approvals .....</b>	<b>73</b>
Note .....	73
71 General .....	73
72 Water supply works authorised to take water from groundwater .....	75
<b>Part 13 Amendment of this Plan .....</b>	<b>77</b>
73 General .....	77
74 Part 1 .....	78
75 Part 4 .....	78
76 Part 6 .....	78
77 Part 7 .....	78
78 Part 9 .....	79
79 Part 10 .....	80
80 Part 12 .....	81
81 Dictionary .....	81
82 Schedules .....	81
83 Other .....	82
<b>Dictionary .....</b>	<b>83</b>

**Schedule 1 Access licences subject to the cease to take conditions specified in clause 47 (7)**

..... 86

**Schedule 2 Access rules for in-river dam pools**..... 86

**Schedule 3 Access licences used to take surface water exempt from cease to take rules**

..... 87

**Schedule 4 Contamination sources in these water sources** ..... 88

**Appendix 1 Overview of the Plan Map**..... 88

**Appendix 2 Inspection of the Plan Map** ..... 89

**Appendix 3 Overview map of the management zones in the Coastal Macleay Water Source**

..... 89

**Appendix 4 Office**..... 91

**Historical notes** ..... 92

# Water Sharing Plan for the Macleay Unregulated and Alluvial Water Sources 2016



New South Wales

---

## Part 1 Introduction

**Note.** Part 13 allows for amendments to be made to this Part.

### 1 Name of Plan

This Plan is the *Water Sharing Plan for the Macleay Unregulated and Alluvial Water Sources 2016 (this Plan)*.

### 2 Nature and status of Plan

- (1) This Plan is made under section 50 of the *Water Management Act 2000 (the Act)*.
- (2) This Plan is a plan for water sharing and generally deals with the matters set out in sections 20 and 21 of the Act, as well as other sections of the Act.

**Note.** Where a provision of this Plan is made under another section of the Act, the section is referred to in the notes to this Plan.

### 3 Commencement

This Plan commences on 1 July 2016.

**Notes.**

- 1 In accordance with section 43 of the Act, this Plan will have effect for 10 years from 1 July 2016.
- 2 The Minister may extend this Plan for a further period of 10 years after it is due to expire, in accordance with section 43A of the Act.

### 4 Application of Plan

- (1) This Plan applies to the following water sources known as the Macleay Unregulated and Alluvial Water Sources (*these water sources*) within the Mid North Coast Water Management Area:
  - (a) the Macleay Unregulated and Upriver Alluvial Water Sources (*these connected water sources*) comprised of the following water sources:
    - (i) Apsley Gorge Water Source,
    - (ii) Apsley River Water Source,
    - (iii) Bakers Creek Water Source,
    - (iv) Blue Mountain Creek Water Source,

- (v) Chandler Gorge Water Source,
- (vi) Chandler River Water Source,
- (vii) Christmas Creek Water Source,
- (viii) Coastal Macleay Water Source,
- (ix) Collombatti Creek Water Source,
- (x) Commissioners Waters Water Source,
- (xi) Dungay Creek Water Source,
- (xii) Dyke River Water Source,
- (xiii) Euroka Creek Water Source,
- (xiv) Five Day Creek Water Source,
- (xv) Gara River Water Source,
- (xvi) Georges River Water Source,
- (xvii) Gills Bridge Creek Water Source,
- (xviii) Green Gully Water Source,
- (xix) Hickeys Creek Water Source,
- (xx) Kunderang Brook Water Source,
- (xxi) Macleay Gorges Water Source,
- (xxii) Macleay Valley Water Source,
- (xxiii) Malpas Dam Water Source,
- (xxiv) Mungay Creek Water Source,
- (xxv) Nulla Nulla Creek Water Source,
- (xxvi) Oaky River Water Source,
- (xxvii) Salisbury Waters Water Source,
- (xxviii) Stockyard Creek Water Source,
- (xxix) Styx River Water Source,
- (xxx) Tia River Water Source,
- (xxxi) Toorumbree Creek Water Source,
- (xxxii) Warbro Brook Water Source,



(xxxiii) Yarrowitch River Water Source,

(b) the Coastal Macleay Floodplain Alluvial Groundwater Source.

**Note.** The Mid North Coast Water Management Area was constituted by Ministerial order made under section 11 of the Act and published in the NSW Government Gazette No 180 on 23 November 2001 at page 9389.

(2) These water sources are shown on [the Plan Map](#) called [Plan Map \(WSP031\\_Version 1\) Water Sharing Plan for the Macleay Unregulated and Alluvial Water Sources 2016](#) (*the Plan Map*).

**Note.** [The Plan Map](#) is part of this Plan. An overview of [the Plan Map](#) is shown in Appendix 1. Copies of [the Plan Map](#) may be inspected at the offices listed in Appendix 2 and are available on the NSW legislation website.

(3) Subject to subclause (5), these connected water sources include all water:

(a) occurring naturally on the surface of the ground within the boundaries of these connected water sources shown on [the Plan Map](#), and

(b) in rivers, lakes, estuaries and wetlands within the boundaries of these connected water sources shown on [the Plan Map](#), and

(c) contained within all alluvial sediments below the surface of the ground within the boundaries of these connected water sources shown on [the Plan Map](#) (*these upriver alluvial sediments*).

**Notes.**

**1** *Alluvial sediments* is defined in the Dictionary.

**2** This Plan also applies to alluvial sediments below the surface of the ground within the Apsley River Water Source, the Commissioners Waters Water Source and the Toorumbbee Creek Water Source which were not included in the [Water Sharing Plan for the Apsley River Water Source 2003](#), the [Water Sharing Plan for the Commissioners Waters Water Source 2003](#) and the [Water Sharing Plan for the Toorumbbee Creek Water Source 2003](#).

(4) Subject to subclause (5), the Coastal Macleay Floodplain Alluvial Groundwater Source includes all water contained within all alluvial sediments below the surface of the ground within the boundaries of the Coastal Macleay Floodplain Alluvial Groundwater Source, shown on [the Plan Map](#).

(5) These water sources do not include water:

(a) contained within sand formations below the surface of the ground, or

(b) contained in any fractured rock or porous rock, or

(c) occurring in rivers, lakes, estuaries and wetlands downstream of the mangrove limit.

**Note.** *Mangrove limit* is defined in the Dictionary.

(6) This Plan replaces:

(a) the [Water Sharing Plan for the Apsley River Water Source 2003](#), and

(b) the [Water Sharing Plan for the Toorumbbee Creek Water Source 2003](#), and

(c) the [Water Sharing Plan for the Commissioners Waters Water Source 2003](#).

## 5 Management zones

(1) For the purposes of this Plan, the following water sources are divided into the following management zones:

(a) Coastal Macleay Water Source:

(i) Tidal Management Zone,

(ii) Non-Tidal Management Zone,

(b) Commissioners Waters Water Source:

(i) Commissioners Waters Management Zone,

**Note.** The Commissioners Waters Management Zone includes all rivers in the Commissioners Waters Water Source apart from the main trunk of the Dumaresq Creek downstream of Armidale water supply treatment plant.

(ii) Dumaresq Creek Management Zone.

**Note.** The Dumaresq Creek Management Zone includes the main trunk of Dumaresq Creek in the Commissioners Waters Water Source downstream of Armidale water supply treatment plant.

### Notes.

1 **Management zone** is defined in the Dictionary.

2 An overview map of the management zones in the Coastal Macleay Water Source is shown in Appendix 3.

(2) The management zones in subclause (1) are shown on [the Plan Map](#).

## 6 Extraction management unit for these water sources

(1) This Plan applies to the Macleay River Extraction Management Unit (**the EMU**) that includes the water sources specified in Column 2 of Table A to this clause.

(2) The EMU specified in subclause (1) is shown on [the Plan Map](#).

### Notes.

1 A long-term average annual extraction limit is established in Part 7 of this Plan for the EMU. The long-term average annual extraction limit determines the maximum volume of water that may be extracted under access licences and pursuant to domestic and stock rights and native title rights from all water sources within the EMU on a long-term average annual basis.

2 The EMU was established under the [Water Sharing Plan for the Apsley River Water Source 2003](#), the [Water Sharing Plan for the Commissioners Waters Water Source 2003](#) and the [Water Sharing Plan for the Toorumbie Creek Water Source 2003](#).

### Table A—Extraction management unit

Column 1—Extraction management unit      Column 2—Water sources

Macleay River Extraction Management Unit

Apsley Gorge Water Source  
Apsley River Water Source  
Bakers Creek Water Source  
Blue Mountain Creek Water Source  
Chandler Gorge Water Source  
Chandler River Water Source  
Christmas Creek Water Source  
Coastal Macleay Water Source  
Collombatti Creek Water Source  
Commissioners Waters Water Source  
Dungay Creek Water Source  
Dyke River Water Source  
Euroka Creek Water Source  
Five Day Creek Water Source  
Gara River Water Source  
Georges River Water Source  
Gills Bridge Creek Water Source  
Green Gully Water Source  
Hickeys Creek Water Source  
Kunderang Brook Water Source  
Macleay Gorges Water Source  
Macleay Valley Water Source  
Malpas Dam Water Source  
Mungay Creek Water Source  
Nulla Nulla Creek Water Source  
Oakley River Water Source  
Salisbury Waters Water Source  
Stockyard Creek Water Source  
Styx River Water Source  
Tia River Water Source  
Toorumbie Creek Water Source  
Warbro Brook Water Source  
Yarrowitch River Water Source

## **7 Understanding the rules in this Plan**

This Plan contains various rules. Where appropriate, the rules specified in this Plan are given effect by the mandatory conditions for access licences and water supply work approvals contained in Part 12 of this Plan.

## **8 Interpretation**

- (1) Words and expressions that are defined in the Dictionary to this Plan have the meanings set out in the Dictionary.
- (2) Unless otherwise defined in this Plan, words and expressions that are defined in the Act or in the regulations made under the Act have the same meaning in this Plan.
- (3) Unless otherwise specified in this Plan, a clause that applies to a category of access licence also applies to any subcategories of that category of access licence.
- (4) The Dictionary and Schedules to this Plan form part of this Plan.

(5) Notes in the text of this Plan do not form part of this Plan.

(6) Appendices to this Plan do not form part of this Plan.

## Part 2 Vision, objectives, strategies and performance indicators

**Note.** This Part is made in accordance with section 35 (1) of the Act.

### 9 Vision statement

The vision for this Plan is to provide for healthy and enhanced water sources and water-dependent ecosystems and for equitable water sharing among users in these water sources.

### 10 Acknowledgement

Respect is paid to the traditional owners of this country, who are acknowledged as the first natural resource managers within these water sources.

### 11 Objectives

The objectives of this Plan are to:

- (a) protect, preserve, maintain and enhance the important river flow dependent and high priority groundwater-dependent ecosystems of these water sources, and

**Note.** *Groundwater-dependent ecosystems* is defined in the Dictionary.

- (b) protect, preserve, maintain and enhance the Aboriginal, cultural and heritage values of these water sources, and
- (c) protect basic landholder rights, and
- (d) manage these water sources to ensure equitable sharing between users, and
- (e) provide opportunities for enhanced market based trading of access licences and water allocations within environmental and system constraints, and
- (f) provide water allocation account management rules which allow sufficient flexibility in water use, and
- (g) contribute to the maintenance of water quality, and
- (h) provide recognition of the connectivity between surface water and groundwater, and
- (i) adaptively manage these water sources, and
- (j) contribute to the “environmental and other public benefit outcomes” identified under the “Water Access Entitlements and Planning Framework” in the *Intergovernmental Agreement on a National Water Initiative (2004) (the NWI)*.

**Note.** Under the NWI, water that is provided by NSW to meet agreed environmental and other public benefit outcomes as defined within relevant water plans is to:

- (a) be given statutory recognition and have at least the same degree of security as water access entitlements for consumptive use and be fully accounted for, and
- (b) be defined as the water management arrangements required to meet the outcomes sought, including water provided on a rules basis or held as a water access entitlement, and
- (c) if held as a water access entitlement, potentially be made available to be traded (where physically possible) on the temporary market when not required to meet the environmental and other public benefit outcomes sought and provided such trading is not in conflict with these outcomes.

## **12 Strategies**

The strategies of this Plan are to:

- (a) establish performance indicators, and
- (b) establish environmental water rules, and
- (c) identify water requirements for basic landholder rights, and
- (d) identify water requirements for access licences, and
- (e) establish rules for the granting and amending of access licences and approvals, and
- (f) establish rules that place limits on the availability of water for extraction, and
- (g) establish rules for making available water determinations, and
- (h) establish rules for the operation of water allocation accounts, and
- (i) establish rules which specify the circumstances under which water may be taken, and
- (j) establish access licence dealing rules, and
- (k) identify triggers for and limits to changes to the rules in this Plan.

## **13 Performance indicators**

The following performance indicators are to be used to measure the success of the strategies of this Plan to reach the objectives of this Plan:

- (a) change in low flow regime,
- (b) change in moderate to high flow regime,
- (c) change in surface water and groundwater extraction relative to the long-term average annual extraction limit,
- (d) change in water quality in these water sources,
- (e) change in the ecological condition of these water sources and their dependent ecosystems,
- (f) change in the extent to which domestic and stock rights and native title rights requirements have been met,
- (g) change in economic benefits derived from water extraction and use,

- (h) change in the extent to which water has been made available in recognition of Aboriginal, cultural and heritage values of these water sources.

## **Part 3 Bulk access regime**

### **14 Bulk access regime**

- (1) This Plan establishes a bulk access regime for the extraction of water under access licences in these water sources, having regard to:
  - (a) the environmental water rules established under Part 4 of this Plan, and
  - (b) the requirements for water for basic landholder rights identified in Division 2 of Part 5 of this Plan, and
  - (c) the requirements for water for extraction under access licences identified in Division 3 of Part 5 of this Plan, and
  - (d) the access licence dealing rules established under Part 11 of this Plan.
- (2) The bulk access regime for these water sources:
  - (a) recognises and is consistent with the limits to the availability of water set in relation to these water sources contained in Division 1 of Part 7 of this Plan, and
  - (b) establishes rules according to which access licences are to be granted and managed contained in Parts 8 and 9 of this Plan and available water determinations to be made contained in Division 2 of Part 7 of this Plan, and
  - (c) recognises the effect of climatic variability on the availability of water as described in clause 15, and
  - (d) establishes rules with respect to the priorities according to which water allocations are to be adjusted as a consequence of any reduction in the availability of water due to an increase in average annual extraction against the long-term average annual extraction limit contained in Division 1 of Part 7 of this Plan, and
  - (e) contains provisions with respect to the conditions that must be imposed as mandatory conditions on access licences contained in Division 2 of Part 12 of this Plan, and
  - (f) recognises and is consistent with the water management principles set out in section 5 of the Act.

### **15 Climatic variability**

This Plan recognises the effects of climatic variability on river flow and groundwater levels in these water sources by having provisions that:

- (a) manage the sharing of water in these water sources within the limits of water availability on a long-term average annual basis and the priorities according to which water allocations are to be adjusted as a consequence of any reduction in the availability of water due to an increase in the average annual extraction against the long-term average annual extraction limit, contained in Division 1 of Part 7 of this Plan, and

- (b) manage the sharing of water in specified water sources on a daily basis in these water sources, contained in Division 2 of Part 9 of this Plan.

**Note.** Other statutory tools are available to manage for climatic variability within a water source, for example, temporary water restrictions under section 324 of the Act.

## Part 4 Planned environmental water provisions

### Notes.

- 1 This Part is made in accordance with sections 8, 8A and 20 of the Act.
- 2 Part 13 allows for amendments to be made to this Part.

### 16 General

This Part contains environmental water rules for the commitment, identification, establishment and maintenance of planned environmental water in these water sources.

**Note.** In accordance with the Act, **planned environmental water** is water that is committed by management plans for fundamental ecosystem health or other specified environmental purposes, either generally or at specified times or in specified circumstances and that cannot, to the extent committed, be taken or used for any other purpose.

### 17 Commitment and identification of planned environmental water

Water is committed and identified as planned environmental water in these water sources in the following ways:

- (a) by reference to the commitment of the physical presence of water in these water sources,
- (b) by reference to the long-term average annual commitment of water as planned environmental water,
- (c) by reference to the water that is not committed after the commitments to basic landholder rights and for sharing and extraction under any other rights have been met.

### 18 Establishment and maintenance of planned environmental water

(1) Planned environmental water is established in these water sources as follows:

- (a) it is the physical presence of water:
  - (i) in these connected water sources that results from the access rules specified in Division 2 of Part 9 of this Plan, and

**Note.** The rules in Division 2 of Part 9 of this Plan for these connected water sources set flow rates or flow levels below which the taking of water is not permitted. Some limited exemptions apply.
  - (ii) in the Malpas Dam Water Source that results from the release rules as specified in clause 28, and

**Note.** The rules in clause 28 ensure a portion of the inflows to Malpas Dam in the Malpas Dam Water Source are released for environmental and other purposes.
  - (iii) in the Coastal Macleay Floodplain Alluvial Groundwater Source that is equal to 95% of the long-term average annual rainfall recharge, and

#### Notes.

- 1 At the commencement of this Plan the long-term average annual rainfall recharge for the Coastal Macleay Floodplain Alluvial Groundwater Source is estimated to be 32,628 megalitres per

year.

**2 Recharge** is defined in the Dictionary.

**3** Part 13 allows for amendments to be made to increase the long-term average annual extraction limit for the Coastal Macleay Floodplain Alluvial Groundwater Source during the term of this Plan. The maximum allowable increase in the long-term average annual extraction limit would result in a minimum of 75% of rainfall recharge being protected as planned environmental water over the long-term.

- (iv) in the Coastal Macleay Floodplain Alluvial Groundwater Source that is within the groundwater storage of the Coastal Macleay Floodplain Alluvial Groundwater Source over the long term,

**Note.** Groundwater sources generally store large volumes of water, often accumulated over thousands or even tens of thousands of years. The amount of annual recharge is often very small compared to this stored volume. The average annual volume of water permitted to be extracted under the rules in this Plan is less than the average annual recharge of the Coastal Macleay Floodplain Alluvial Groundwater Source over the long term, ensuring that water within the groundwater storage of the Coastal Macleay Floodplain Alluvial Groundwater Source is protected from extraction.

- (b) it is the long-term average annual commitment of water as planned environmental water in:
    - (i) these water sources that results from the application of the long-term average annual extraction limit and compliance rules as specified in Division 1 of Part 7 of this Plan and the available water determination rules as specified in Division 2 of Part 7 of this Plan, and
    - (ii) the Coastal Macleay Floodplain Alluvial Groundwater Source that is equal to 95% of the long-term average annual rainfall recharge, and
    - (iii) the Coastal Macleay Floodplain Alluvial Groundwater Source that is within the groundwater storage of the Coastal Macleay Floodplain Alluvial Groundwater Source over the long term,
  - (c) it is the water remaining in these water sources after water has been taken pursuant to basic landholder rights and access licences in accordance with the rules specified in Parts 7 and 9 of this Plan.
- (2) The planned environmental water established under subclause (1) (a) is maintained in:
    - (a) these connected water sources by the rules specified in Division 2 of Part 9 of this Plan, and
    - (b) the Malpas Dam Water Source by the release rules as specified in clause 28, and
    - (c) the Coastal Macleay Floodplain Alluvial Groundwater Source by the rules specified in Parts 7 and 9 of this Plan.
  - (3) The planned environmental water established under subclause (1) (b) is maintained in these water sources by the application of the long-term average annual extraction limit and compliance rules as specified in Division 1 of Part 7 of this Plan and the available water determinations as specified in Division 2 of Part 7 of this Plan.
  - (4) The planned environmental water established under subclause (1) (c) is maintained in these water sources by the rules specified in Parts 7 and 9 of this Plan.

**Note.** The rules in Part 7 of this Plan ensure that there will be water remaining in these water sources over the



long term by maintaining compliance with the long-term average annual extraction limits. The rules in Part 7 provide for a reduction in available water determinations when the long-term average annual extraction limits have been assessed to have been exceeded.

## Part 5 Requirements for water

### Division 1 General

#### 19 Application

- (1) This Part identifies the requirements for water from these water sources for basic landholder rights (Division 2) and for extraction under access licences (Division 3).
- (2) The volumes of water specified in this Part represent the estimated water requirements of persons entitled to basic landholder rights in these water sources and the total volumes or unit shares specified in the share components of all access licences in these water sources. The actual volumes of water available for extraction in these water sources at any time will depend on factors such as climatic variability, access licence priority and the rules in this Plan.
- (3) This Plan recognises that basic landholder rights in these water sources and the total share components of all access licences authorised to extract water from these water sources may change during the term of this Plan. This Plan manages such changes by having provisions that manage the sharing of water within the limits of water availability, as provided for in Division 1 of Part 7 of this Plan.

**Note.** The total share components of access licences in these water sources may change during the term of this Plan as a result of:

- (a) the grant, surrender or cancellation of access licences in these water sources, or
- (b) the variation of local water utility licences under section 66 of the Act, or
- (c) changes due to the volumetric conversion of [Water Act 1912](#) entitlements that are currently non-volumetric.

### Division 2 Requirements for water for basic landholder rights

#### 20 Domestic and stock rights

At the commencement of this Plan, the water requirements of persons entitled to domestic and stock rights in these water sources are estimated to total 2,677 megalitres per year (**ML/year**), distributed as follows:

- (a) 29 ML/year in the Apsley Gorge Water Source,
- (b) 205 ML/year in the Apsley River Water Source,
- (c) 53 ML/year in the Bakers Creek Water Source,
- (d) 54 ML/year in the Blue Mountain Creek Water Source,
- (e) 11 ML/year in the Chandler Gorge Water Source,
- (f) 190 ML/year in the Chandler River Water Source,

- (g) 75 ML/year in the Christmas Creek Water Source,
- (h) 74 ML/year in the Coastal Macleay Floodplain Alluvial Water Source,
- (i) 138 ML/year in the Coastal Macleay Water Source,
- (j) 70 ML/year in the Collombatti Creek Water Source,
- (k) 210 ML/year in the Commissioners Waters Water Source,
- (l) 78 ML/year in the Dungay Creek Water Source,
- (m) 8 ML/year in the Dyke River Water Source,
- (n) 8 ML/year in the Euroka Creek Water Source,
- (o) 64 ML/year in the Five Day Creek Water Source,
- (p) 84 ML/year in the Gara River Water Source,
- (q) 8 ML/year in the Georges River Water Source,
- (r) 5 ML/year in the Gills Bridge Creek Water Source,
- (s) 7 ML/year in the Green Gully Water Source,
- (t) 92 ML/year in the Hickeys Creek Water Source,
- (u) 2 ML/year in the Kunderang Brook Water Source,
- (v) 14 ML/year in the Macleay Gorges Water Source,
- (w) 483 ML/year in the Macleay Valley Water Source,
- (x) 49 ML/year in the Malpas Dam Water Source,
- (y) 43 ML/year in the Mungay Creek Water Source,
- (z) 63 ML/year in the Nulla Nulla Creek Water Source,
- (aa) 36 ML/year in the Oaky River Water Source,
- (bb) 237 ML/year in the Salisbury Waters Water Source,
- (cc) 19 ML/year in the Stockyard Creek Water Source,
- (dd) 22 ML/year in the Styx River Water Source,
- (ee) 53 ML/year in the Tia River Water Source,
- (ff) 75 ML/year in the Toorumbree Creek Water Source,
- (gg) 57 ML/year in the Warbro Brook Water Source,
- (hh) 61 ML/year in the Yarrowitch River Water Source.

**Notes.**

1 Domestic and stock rights are set out in Division 1 of Part 1 of Chapter 3 of the Act and must be exercised in accordance with any mandatory guidelines established under the Act with respect to the taking and use of water for domestic consumption or stock watering. The volumes set out in this clause are separate from any volumes of water licensed for domestic and stock purposes in these water sources.

2 Inherent water quality and land use activities may make the water in some areas unsuitable for human consumption. Water from these water sources should not be consumed without first being tested and, if necessary, appropriately treated. Such testing and treatment is the responsibility of the water user.

## **21 Native title rights**

At the commencement of this Plan, there are no native title rights in these water sources. Therefore the water requirements for native title rights are 0 ML/year.

**Note.** A change in native title rights may occur pursuant to the provisions of the [Native Title Act 1993](#) of the Commonwealth.

## **22 Harvestable rights**

The requirement for water under harvestable rights in these water sources is equal to the total amount of water that owners or occupiers of landholdings are entitled to capture and store pursuant to a harvestable rights order made under Division 2 of Part 1 of Chapter 3 of the Act.

## **Division 3 Requirements for water for extraction under access licences**

### **23 Share components of domestic and stock access licences**

It is estimated that at the time of commencement of this Plan the share components of domestic and stock access licences authorised to take water from these water sources total 208 ML/year, distributed as follows:

- (a) 0 ML/year in the Apsley Gorge Water Source,
- (b) 4.5 ML/year in the Apsley River Water Source,
- (c) 30.5 ML/year in the Bakers Creek Water Source,
- (d) 8 ML/year in the Blue Mountain Creek Water Source,
- (e) 0 ML/year in the Chandler Gorge Water Source,
- (f) 13 ML/year in the Chandler River Water Source,
- (g) 0 ML/year in the Christmas Creek Water Source,
- (h) 0 ML/year in the Coastal Macleay Floodplain Alluvial Groundwater Source,
- (i) 4 ML/year in the Coastal Macleay Water Source,
- (j) 0 ML/year in the Collombatti Creek Water Source,
- (k) 46 ML/year in the Commissioners Waters Water Source,
- (l) 0 ML/year in the Dungay Creek Water Source,
- (m) 0 ML/year in the Dyke River Water Source,

- (n) 0 ML/year in the Euroka Creek Water Source,
- (o) 0 ML/year in the Five Day Creek Water Source,
- (p) 19 ML/year in the Gara River Water Source,
- (q) 0 ML/year in the Georges River Water Source,
- (r) 0 ML/year in the Gills Bridge Creek Water Source,
- (s) 0 ML/year in the Green Gully Water Source,
- (t) 0 ML/year in the Hickeys Creek Water Source,
- (u) 0 ML/year in the Kunderang Brook Water Source,
- (v) 0 ML/year in the Macleay Gorges Water Source,
- (w) 8 ML/year in the Macleay Valley Water Source,
- (x) 4.5 ML/year in the Malpas Dam Water Source,
- (y) 0 ML/year in the Mungay Creek Water Source,
- (z) 0 ML/year in the Nulla Nulla Creek Water Source,
- (aa) 10 ML/year in the Oaky River Water Source,
- (bb) 55 ML/year in the Salisbury Waters Water Source,
- (cc) 0 ML/year in the Stockyard Creek Water Source,
- (dd) 0 ML/year in the Styx River Water Source,
- (ee) 5.5 ML/year in the Tia River Water Source,
- (ff) 0 ML/year in the Toorumbree Creek Water Source,
- (gg) 0 ML/year in the Warbro Brook Water Source,
- (hh) 0 ML/year in the Yarrowitch River Water Source.

#### **24 Share components of local water utility access licences**

It is estimated that at the time of commencement of this Plan the share components of local water utility access licences authorised to take water from these water sources total 17,822 ML/year, distributed as follows:

- (a) 130 ML/year in the Gara River Water Source,
- (b) 10,141 ML/year in the Macleay Valley Water Source,
- (c) 7,501 ML/year in the Malpas Dam Water Source,
- (d) 50 ML/year in the Nulla Nulla Creek Water Source,

- (e) 0 ML/year in all other water sources.

## **25 Share components of unregulated river access licences**

It is estimated that at the time of commencement of this Plan the share components of unregulated river access licences authorised to take water from these water sources total 14,333 unit shares, distributed as follows:

- (a) 0 unit shares in the Apsley Gorge Water Source,
- (b) 326 unit shares in the Apsley River Water Source,
- (c) 100 unit shares in the Bakers Creek Water Source,
- (d) 253 unit shares in the Blue Mountain Creek Water Source,
- (e) 0 unit shares in the Chandler Gorge Water Source,
- (f) 301 unit shares in the Chandler River Water Source,
- (g) 0 unit shares in the Christmas Creek Water Source,
- (h) 1,836 unit shares in the Coastal Macleay Water Source,
- (i) 8 unit shares in the Collombatti Creek Water Source,
- (j) 2,166 unit shares in the Commissioners Waters Water Source,
- (k) 265 unit shares in the Dungay Creek Water Source,
- (l) 0 unit shares in the Dyke River Water Source,
- (m) 0 unit shares in the Euroka Creek Water Source,
- (n) 60 unit shares in the Five Day Creek Water Source,
- (o) 1,412 unit shares in the Gara River Water Source,
- (p) 0 unit shares in the Georges River Water Source,
- (q) 273 unit shares in the Gills Bridge Creek Water Source,
- (r) 0 unit shares in the Green Gully Water Source,
- (s) 76 unit shares in the Hickeys Creek Water Source,
- (t) 0 unit shares in the Kunderang Brook Water Source,
- (u) 2 unit shares in the Macleay Gorges Water Source,
- (v) 3,432 unit shares in the Macleay Valley Water Source,
- (w) 144 unit shares in the Malpas Dam Water Source,
- (x) 103 unit shares in the Mungay Creek Water Source,

- (y) 66 unit shares in the Nulla Nulla Creek Water Source,
- (z) 55 unit shares in the Oaky River Water Source,
- (aa) 1,476 unit shares in the Salisbury Waters Water Source,
- (bb) 0 unit shares in the Stockyard Creek Water Source,
- (cc) 213 unit shares in the Styx River Water Source,
- (dd) 703 unit shares in the Tia River Water Source,
- (ee) 0 unit shares in the Toorumbree Creek Water Source,
- (ff) 304 unit shares in the Warbro Brook Water Source,
- (gg) 759 unit shares in the Yarrowitch River Water Source.

## **26 Share components of unregulated river (high flow) access licences**

It is estimated that at the time of commencement of this Plan the share components of unregulated river (high flow) access licences authorised to take water from these water sources total 0 unit shares, distributed as follows:

- (a) 0 unit shares in the Apsley River Water Source,
- (b) 0 unit shares in the Macleay Valley Water Source.

**Note.** The water sources listed above are the only water sources within this Plan area which have been identified as suitable for unregulated river (high flow) access licences. Part 11 of this Plan allows for a specified amount of share components to be converted to unregulated river (high flow) access licences. However, at the commencement of this Plan, there are no existing access licences of this category, hence the 0 unit shares indicated.

## **27 Share components of aquifer access licences**

It is estimated that at the time of commencement of this Plan the share components of aquifer access licences authorised to take water from these water sources total 302 unit shares distributed as follows:

- (a) 140 unit shares in the Coastal Macleay Floodplain Alluvial Groundwater Source,
- (b) 162 unit shares in the Macleay Valley Water Source,
- (c) 0 unit shares in all other water sources.

## **Part 6 System Operations Rules**

**Note.** Part 13 allows for amendments to be made to this Part.

### **28 Releases in the Malpas Dam Water Source**

- (1) In the Malpas Dam Water Source, releases of water must be made from Malpas Dam in accordance with this clause.
- (2) Subject to subclause (3), when inflows to Malpas Dam, as measured at the Gara River at Willow

Glen gauge (206035), are:

- (a) less than 1 ML/day, a release equal to or greater than the inflows plus 1 ML/day, as measured at the Gara River downstream Malpas Dam gauge (206039), must be made from Malpas Dam, or
  - (b) equal to or greater than 1 ML/day and less than or equal to 6 ML/day, a release of 2 ML/day or greater, as measured at the Gara River downstream Malpas Dam gauge (206039), must be made from Malpas Dam, or
  - (c) greater than 6 ML/day, a release of 3 ML/day or greater, as measured at the Gara River downstream Malpas Dam gauge (206039), must be made from Malpas Dam.
- (3) Subclause (2) does not apply when the Malpas Dam is less than or equal to 55% of the dam's storage capacity.

**Note.** At the commencement of this Plan, the storage capacity of Malpas Dam is estimated to be 13,000 ML and 55% of the storage capacity is estimated to equate to 7,150 ML.

## Part 7 Limits to the availability of water

**Note.** Part 13 allows for amendments to be made to this Part.

### Division 1 Long-term average annual extraction limits

#### 29 General

The availability of water for extraction in these water sources on a long-term basis is to be managed in accordance with this Part.

#### 30 Volume of the long-term average annual extraction limits

- (1) This clause establishes the long-term average annual extraction limits for the EMU and the Coastal Macleay Floodplain Alluvial Groundwater Source.
- (2) The long-term average annual extraction limit for the EMU is the sum of:
  - (a) the share component of all access licences in the EMU, plus
  - (b) the annual water requirements pursuant to domestic and stock rights and native title rights within the EMU.
- (3) The long-term average annual extraction limit for the Coastal Macleay Floodplain Alluvial Groundwater Source is 1,599 ML/year.

**Notes.**

**1** The long-term average annual extraction limit for the Coastal Macleay Floodplain Alluvial Groundwater Source is equal to current entitlements plus estimated future water requirements for the term of this Plan.

**2** Part 13 allows for the long-term average annual extraction limit for the Coastal Macleay Floodplain Alluvial Groundwater Source to be increased to 8,157 ML/year.

**Note.** Under section 8F of the Act the long-term average annual extraction limit is taken to be varied by the amount of any change to the amount of water committed as licensed environmental water, excluding water committed under section 8C of the Act. Water committed as licensed environmental water is not to be accounted for as extraction. The variation in the long-term average annual extraction limit is to be determined in accordance with a methodology approved by the Minister and published in the Gazette.

**31 Calculation of current levels of annual extraction**

After each water year, the total volume of water taken during that water year:

- (a) under all categories of access licences, and
- (b) pursuant to domestic and stock rights and native title rights,

must be calculated for the EMU and the Coastal Macleay Floodplain Alluvial Groundwater Source respectively.

**32 Assessment of average annual extractions against long-term average annual extraction limits**

- (1) An assessment of average annual extractions against the long-term average annual extraction limit is to be conducted for:
  - (a) the EMU as set out in subclause (2), and
  - (b) the Coastal Macleay Floodplain Alluvial Groundwater Source as set out in subclause (3).
- (2) Commencing in the fourth water year in which this Plan has effect, the assessment referred to in subclause (1) (a) must compare the long-term average annual extraction limit established under clause 30 (2) for the EMU against the average of the annual extraction in the preceding three water years as calculated under clause 31 for the EMU.
- (3) Commencing in the fourth water year in which this Plan has effect, the assessment referred to in subclause (1) (b) must compare the long-term average annual extraction limit established in clause 30 (3) for the Coastal Macleay Floodplain Alluvial Groundwater Source against the average of the annual extractions in the preceding three water years as calculated under clause 31 for the Coastal Macleay Floodplain Alluvial Groundwater Source.

**33 Compliance with the long-term average annual extraction limit for the EMU**

- (1) Compliance with the long-term average annual extraction limit established for the EMU is to be managed in accordance with this clause.
- (2) Commencing in the fourth water year in which this Plan has effect, if, in the Minister's opinion, the assessment under clause 32 demonstrates that the average of the annual extractions in the EMU in the preceding three water years has exceeded the long-term average annual extraction limit established under clause 30 for the EMU by 5% or more, then available water determinations for unregulated river access licences, unregulated river (high flow) access licences and aquifer access licences in the EMU are to be reduced for the following water year in accordance with subclause (3).
- (3) The reduction under subclause (2) is to be of an amount that is, in the Minister's opinion, necessary to return the long-term average annual extractions in the EMU to the long-term average annual extraction limit for the EMU established under this Part.

**34 Compliance with the long-term average annual extraction limit for the Coastal Macleay Floodplain Alluvial Groundwater Source**

- (1) Compliance with the long-term average annual extraction limit established for the Coastal



Macleay Floodplain Alluvial Groundwater Source is to be managed in accordance with this clause.

- (2) Commencing in the fourth water year in which this Plan has effect, if, in the Minister's opinion, the assessment under clause 32 demonstrates that the average of the annual extractions in the Coastal Macleay Floodplain Alluvial Groundwater Source in the preceding three water years has exceeded the long-term average annual extraction limit established under clause 30 for the Coastal Macleay Floodplain Alluvial Groundwater Source by 5% or more, then available water determinations for aquifer access licences in the Coastal Macleay Floodplain Alluvial Groundwater Source are to be reduced for the following water year in accordance with subclause (3).
- (3) The reduction under subclause (2) is to be of an amount that is, in the Minister's opinion, necessary to return the long-term average annual extractions in the Coastal Macleay Floodplain Alluvial Groundwater Source to the long-term average annual extraction limit for the Coastal Macleay Floodplain Alluvial Groundwater Source established under this Part.

## **Division 2 Available water determinations**

### **35 General**

- (1) Available water determinations for access licences with share components that specify any one of these water sources are to be expressed as either:
  - (a) a percentage of the share component for access licences where share components are specified as ML/year, or
  - (b) megalitres (**ML**) per unit share for access licences where share components are specified as a number of unit shares.
- (2) Subject to subclause (3), the sum of available water determinations made for any access licence with a share component that specifies one of these water sources must not, in any water year, exceed:
  - (a) 100% of the access licence share component, or such lower amount that is determined under Division 1 of this Part, for all access licences where share components are specified as ML/year, or
  - (b) 1 ML per unit share of the access licence share component, or such lower amount that is determined under Division 1 of this Part, for all access licences where share components are specified as a number of unit shares.
- (3) For the first water year in which this Plan has effect, subclause (2) does not apply to access licences with a share component that specifies one of these water sources, excluding:
  - (a) domestic and stock access licences, local water utility access licences, unregulated river access licences and unregulated river (high flow) access licences with a share component that specifies the Apsley River Water Source, the Commissioners Waters Water Source or the Toorumbie Creek Water Source, or
  - (b) access licences with a share component that specifies the Coastal Macleay Floodplain Alluvial Groundwater Source.

**36 Available water determinations for these connected water sources, excluding the Apsley River Water Source, the Commissioners Waters Water Source and the Toorumbbee Creek Water Source, made at the commencement of this Plan**

- (1) In making available water determinations at the commencement of this Plan, the Minister should consider the rules in this clause.
- (2) At the commencement of this Plan, the following available water determinations should be made for access licences with a share component that specifies one of these connected water sources, excluding the Apsley River Water Source, the Commissioners Waters Water Source and the Toorumbbee Creek Water Source:
  - (a) 200% of the access licence share component for domestic and stock access licences,
  - (b) 200% of the access licence share component for local water utility access licences,
  - (c) 2 ML per unit of share component for unregulated river access licences,
  - (d) 2 ML per unit of share component for unregulated river (high flow) access licences,
  - (e) 2 ML per unit of share component for aquifer access licences.

**37 Available water determinations for these connected water sources, excluding the Apsley River Water Source, the Commissioners Waters Water Source and the Toorumbbee Creek Water Source, after the first water year of this Plan**

- (1) In making available water determinations after the first water year in which this Plan has effect, the Minister should consider the rules in this clause.
- (2) At the commencement of each water year after the first water year in which this Plan has effect, the following available water determinations should be made for access licences with a share component that specifies one of these connected water sources, excluding the Apsley River Water Source, the Commissioners Waters Water Source and the Toorumbbee Creek Water Source:
  - (a) 100% of the access licence share component for domestic and stock access licences,
  - (b) 100% of the access licence share component for local water utility access licences,
  - (c) 1 ML per unit of share component for unregulated river access licences,
  - (d) 1 ML per unit of share component for unregulated river (high flow) access licences,
  - (e) 1 ML per unit of share component for aquifer access licences,

or such lower amount that is determined under Division 1 of this Part.

**Note.** Division 1 of this Part provides for available water determinations for unregulated river access licences, unregulated river (high flow) access licences and aquifer access licences to be reduced where the long-term average annual extraction limit for the EMU has been assessed to have been exceeded, as per clauses 32 and 33.

**38 Available water determinations for the Apsley River Water Source, the Commissioners Waters Water Source and the Toorumbbee Creek Water Source**

- (1) In making available water determinations for the Apsley River Water Source, the Commissioners

Waters Water Source and the Toorumbbee Creek Water Source, the Minister should consider the rules in this clause.

- (2) At the commencement of this Plan and at the commencement of each water year after the first water year in which this Plan has effect, the following available water determinations should be made for access licences with a share component that specifies the Apsley River Water Source, the Commissioners Waters Water Source or the Toorumbbee Creek Water Source:
- (a) 100% of the access licence share component for domestic and stock access licences,
  - (b) 100% of the access licence share component for local water utility access licences,
  - (c) 1 ML per unit of share component for unregulated river access licences,
  - (d) 1 ML per unit of share component for unregulated river (high flow) access licences,
- or such lower amount that is determined under Division 1 of this Part.

**Note.** Division 1 of this Part provides for available water determinations for unregulated river access licences and unregulated river (high flow) access licences to be reduced where the long-term average annual extraction limit for the EMU has been assessed to have been exceeded, as per clauses 32 and 33.

- (3) At the commencement of this Plan, an available water determination of 2 ML per unit of share component should be made for aquifer access licences with a share component that specifies the Apsley River Water Source, the Commissioners Waters Water Source or the Toorumbbee Creek Water Source.
- (4) At the commencement of each water year after the first water year in which this Plan has effect, an available water determination of 1 ML per unit of share component, or such lower amount that is determined under Division 1 of this Part, should be made for aquifer access licences with a share component that specifies the Apsley River Water Source, the Commissioners Waters Water Source or the Toorumbbee Creek Water Source.

**Note.** Division 1 of this Part provides for available water determinations for aquifer access licences to be reduced where the long-term average annual extraction limit for the EMU has been assessed to have been exceeded, as per clauses 32 and 33.

### **39 Available water determinations for the Coastal Macleay Floodplain Alluvial Groundwater Source**

- (1) In making available water determinations for the Coastal Macleay Floodplain Alluvial Groundwater Source, the Minister should consider the rules in this clause.
- (2) At the commencement of this Plan and at the commencement of each water year after the first water year in which this Plan has effect, the following available water determinations should be made for access licences with a share component that specifies the Coastal Macleay Floodplain Alluvial Groundwater Source:
- (a) 100% of the access licence share component for domestic and stock access licences,
  - (b) 100% of the access licence share component for local water utility access licences,
  - (c) 1 ML per unit of share component for aquifer access licences,
- or such lower amount that is determined under Division 1 of this Part.

**Note.** Division 1 of this Part provides for available water determinations for aquifer access licences to be reduced where the long-term average annual extraction limit for the Coastal Macleay Floodplain Alluvial Groundwater Source has been assessed to have been exceeded, as per clauses 32 and 34.

## Part 8 Rules for granting access licences

### Notes.

- 1 This Part is made in accordance with sections 20, 61 and 63 of the Act.
- 2 Access licences granted in these water sources will be subject to mandatory conditions and may be subject to discretionary conditions.

### 40 Specific purpose access licences

**Note.** Section 61 of the Act allows for the granting of specific purpose access licences under the regulations and the relevant water sharing plan. Only those specific purpose access licences listed in clause 10 of the [Water Management \(General\) Regulation 2011](#) can be granted under the regulations. The licences that may be applied for under subclauses (2)–(4) are in addition to applications for the categories and subcategories of specific purpose access licences that may be made in accordance with clause 10 of the [Water Management \(General\) Regulation 2011](#).

- (1) A specific purpose access licence must not be granted in these water sources unless the Minister is satisfied that the share and extraction component of the access licence is the minimum required to meet the circumstances in which the access licence is proposed to be used.
- (2) Subject to subclause (3), applications may be made for unregulated river (subcategory “Aboriginal community development”) access licences in the following water sources:
  - (a) Apsley River Water Source,
  - (b) Chandler River Water Source,
  - (c) Commissioners Waters Water Source,
  - (d) Macleay Valley Water Source,
  - (e) Oaky River Water Source,
  - (f) Styx River Water Source,
  - (g) Tia River Water Source.
- (3) An unregulated river (subcategory “Aboriginal community development”) access licence must not be granted in the water sources listed in subclause (2), if the granting of the access licence would cause the total of share components of unregulated river (subcategory “Aboriginal community development”) access licences to exceed:
  - (a) 88 ML/year in the Apsley River Water Source, and
  - (b) 77 ML/year in the Chandler River Water Source, and
  - (c) 72 ML/year in the Commissioners Waters Water Source, and
  - (d) 500 ML/year in the Macleay Valley Water Source, and
  - (e) 230 ML/year in the Oaky River Water Source, and
  - (f) 230 ML/year in the Styx River Water Source, and

(g) 363 ML/year in the Tia River Water Source.

- (4) Applications may be made for an aquifer (subcategory “Aboriginal community development”) access licence for the taking of water from the Coastal Macleay Floodplain Alluvial Groundwater Source.

**Notes.**

1 The Regulation will provide for the creation of new access licences that authorise the taking of water between the defined tidal limit and the mangrove limit in the Coastal Macleay Water Source (for which no entitlement has previously been required under the [Water Act 1912](#)).

2 An unregulated river (subcategory “Aboriginal community development”) access licence or an aquifer (subcategory “Aboriginal community development”) access licence is a specific purpose access licence and as such can only be the subject of limited trade that is consistent with the purpose for which the licence was granted. Aboriginal communities, enterprises and individuals are encouraged to seek financial assistance from funding bodies to purchase other categories of access licence if they require fully tradable licences.

3 Holders of unregulated river (“Aboriginal community development”) access licences in the above surface waters may only take water when flows in those water sources are above the A Class or the flow threshold specified in clause 47 (17) or (18).

- (5) Applications may not be made for an access licence of the subcategory “Aboriginal cultural” if the share component of the proposed access licence is more than 10 ML/year.

- (6) An access licence of the subcategory “Aboriginal cultural” may only be granted for the taking of water by an Aboriginal person or Aboriginal community for any personal, domestic or communal purpose, including drinking, food preparation, washing, manufacturing traditional artefacts, watering domestic gardens, cultural teaching, hunting, fishing, gathering and for recreational, cultural and ceremonial purposes.

**Note.** *Aboriginal person* is defined in the Dictionary.

#### **41 Granting of access licences as a result of controlled allocation**

The Minister may grant an access licence where the right to apply for the licence has been acquired in a manner prescribed by an order made under section 65 of the Act.

### **Part 9 Rules for managing access licences**

**Notes.**

1 Part 13 of this Plan allows for amendments to be made to this Part.

2 The Act provides for the keeping of water allocation accounts for access licences. The rules in this Part impose further restrictions on the volume of water that may be taken under an access licence over a specified period of time. These restrictions are in addition to any other limits on access licences for the taking of water. It is an offence under the Act to take water under an access licence for which there is no or insufficient water allocation.

### **Division 1 Water allocation account management rules**

#### **42 Individual access licence account management rules for these connected water sources, excluding the Apsley River Water Source, the Commissioners Waters Water Source and the Toorumbie Creek Water Source**

- (1) The rules in this clause apply to the taking of water under an access licence with a share component that specifies one of these connected water sources, excluding the following water sources:

- (a) Apsley River Water Source,
- (b) Commissioners Waters Water Source,

- (c) Toorumbree Creek Water Source.
- (2) For the period of the first three water years in which this Plan has effect, water taken under an access licence must not exceed a volume equal to:
  - (a) 50% of the water allocations accrued to the water allocation account for the access licence from available water determinations in the first water year, plus
  - (b) the sum of water allocations accrued to the water allocation account for the access licence from available water determinations in the second and third water years, plus
  - (c) the net amount of any water allocations assigned to or from the water allocation account for the access licence under section 71T of the Act in those three water years, plus
  - (d) any water allocations recredited to the water allocation account for the access licence in accordance with section 76 of the Act in those three water years.
- (3) For the period of any three consecutive water years after the first water year in which this Plan has effect, water taken under an access licence must not exceed a volume equal to the lesser of:
  - (a) the sum of:
    - (i) water allocations accrued to the water allocation account for the access licence from available water determinations in those three water years, and
    - (ii) the water allocations carried over in the water allocation account for the access licence from the water year prior to those three water years under subclause (4), and
    - (iii) the net amount of any water allocations assigned to or from the water allocation account for the access licence under section 71T of the Act in those three water years, and
    - (iv) any water allocations recredited to the water allocation account for the access licence in accordance with section 76 of the Act in those three water years, or
  - (b) the sum of:
    - (i) the share component of the access licence at the beginning of the first of those three water years, and
    - (ii) the share component of the access licence at the beginning of the second of those three water years, and
    - (iii) the share component of the access licence at the beginning of the third of those three water years, and
    - (iv) the net amount of any water allocations assigned to or from the water allocation account for the access licence under section 71T of the Act in those three water years, and
    - (v) any water allocations recredited to the water allocation account for the access licence in accordance with section 76 of the Act in those three water years.
- (4) The maximum water allocation that can be carried over from one water year to the next in the

water allocation account for an access licence is equal to:

- (a) 100% of the access licence share component for access licences with share components expressed as ML/year, or
- (b) 1 ML per unit share of the access licence share component for access licences with share components expressed as a number of unit shares.

**43 Individual access licence account management rules for the Apsley River Water Source, the Commissioners Waters Water Source and the Toorumbee Creek Water Source**

- (1) The rules in this clause apply to the taking of water under an access licence with a share component that specifies one of the following water sources:
  - (a) Apsley River Water Source,
  - (b) Commissioners Waters Water Source,
  - (c) Toorumbee Creek Water Source.
- (2) For the period of any three consecutive water years in which this Plan has effect, water taken under a domestic and stock access licence, local water utility access licence or an unregulated river access licence must not exceed a volume equal to the lesser of:
  - (a) the sum of:
    - (i) water allocations accrued to the water allocation account for the access licence from available water determinations in those three water years, and
    - (ii) the water allocations carried over in the water allocation account for the access licence from the water year prior to those three water years under subclause (5), and
    - (iii) the net amount of any water allocations assigned to or from the water allocation account for the access licence under section 71T of the Act in those three water years, and
    - (iv) any water allocations reccredited to the water allocation account for the access licence in accordance with section 76 of the Act in those three water years, or
  - (b) the sum of:
    - (i) the share component of the access licence at the beginning of the first of those three water years, and
    - (ii) the share component of the access licence at the beginning of the second of those three water years, and
    - (iii) the share component of the access licence at the beginning of the third of those three water years, and
    - (iv) the net amount of any water allocations assigned to or from the water allocation account for the access licence under section 71T of the Act in those three water years, and

- (v) any water allocations recredited to the water allocation account for the access licence in accordance with section 76 of the Act in those three water years.
- (3) For the period of the first three water years in which this Plan has effect, water taken under an aquifer access licence must not exceed a volume equal to:
  - (a) 50% of the water allocations accrued to the water allocation account for the access licence from available water determinations in the first water year, plus
  - (b) the sum of water allocations accrued to the water allocation account for the access licence from available water determinations in the second and third water years, plus
  - (c) the net amount of any water allocations assigned to or from the water allocation account for the access licence under section 71T of the Act in those three water years, plus
  - (d) any water allocations recredited to the water allocation account for the access licence in accordance with section 76 of the Act in those three water years.
- (4) For the period of any three consecutive water years after the first water year in which this Plan has effect, water taken under an aquifer access licence must not exceed a volume equal to the lesser of:
  - (a) the sum of:
    - (i) water allocations accrued to the water allocation account for the access licence from available water determinations in those three water years, and
    - (ii) the water allocations carried over in the water allocation account for the access licence from the water year prior to those three water years under subclause (5), and
    - (iii) the net amount of any water allocations assigned to or from the water allocation account for the access licence under section 71T of the Act in those three water years, and
    - (iv) any water allocations recredited to the water allocation account for the access licence in accordance with section 76 of the Act in those three water years, or
  - (b) the sum of:
    - (i) the share component of the access licence at the beginning of the first of those three water years, and
    - (ii) the share component of the access licence at the beginning of the second of those three water years, and
    - (iii) the share component of the access licence at the beginning of the third of those three water years, and
    - (iv) the net amount of any water allocations assigned to or from the water allocation account for the access licence under section 71T of the Act in those three water years, and
    - (v) any water allocations recredited to the water allocation account for the access licence in



accordance with section 76 of the Act in those three water years.

- (5) The maximum water allocation that can be carried over from one water year to the next in the water allocation account for an access licence is equal to:
  - (a) 100% of the access licence share component for access licences with share components expressed as ML/year, or
  - (b) 1 ML per unit share of the access licence share component for access licences with share components expressed as a number of unit shares.

#### **44 Individual access licence account management rules for the Coastal Macleay Floodplain Alluvial Groundwater Source**

- (1) The rules in this clause apply to the taking of water under an access licence with a share component that specifies the Coastal Macleay Floodplain Alluvial Groundwater Source.
- (2) In any water year in which this Plan has effect, water taken under an access licence must not exceed a volume equal to:
  - (a) the sum of water allocations accrued to the water allocation account for the access licence from available water determinations in that water year, plus
  - (b) the net amount of any water allocations assigned to or from the water allocation account for the access licence under section 71T of the Act in that water year, plus
  - (c) any water allocations recredited to the water allocation account for the access licence in accordance with section 76 of the Act in that water year.
- (3) Water allocations remaining in the water allocation account for an access licence cannot be carried over from one water year to the next.

### **Division 2 Flow classes and daily access rules**

#### **45 General**

The rules in this Division apply to the taking of water under an access licence with a share component that specifies one of these water sources.

#### **46 Flow classes**

- (1) This Plan establishes the flow classes specified in Column 3 of Table B to this clause for the sharing of flows on a daily basis in these water sources.
- (2) The flow classes in Column 3 of Table B and the reference points specified in Column 6 of Table B are established for each water source specified in Column 1 of Table B and each management zone specified in Column 2 of Table B.
- (3) Subject to subclause (4), a flow class applies in the respective water source or management zone on the day specified in Column 7 of Table B when the flow (ML/day) as measured at the reference point specified in Column 6 of Table B is equal to the flow specified in Column 5 of Table B.
- (4) If in the Minister's opinion, accurate flow data is not available on a particular day from a flow

measuring gauge used to determine a flow class, the Minister may determine the flow class that applies for that day and notify the licence holder in writing of the flow class that applies for that day. For the purpose of this subclause, notification includes publishing a notice on the Department's website.

- (5) For the purpose of determining the flow class that applies on a particular day under subclause (4), the Minister may take into consideration evidence of past and current flows and readings at other functioning upstream and downstream gauges.

**Note.** On days that accurate flow data is not available, holders of access licences may contact the Department's office at the address listed in Appendix 4 or check the Department's website to find out what flow class applies that day.

- (6) The flow classes commence in the Year of this Plan specified in Column 4 of Table B.

**Note.** Only those water sources for which flow classes have been established at the commencement of this Plan are shown in Table B.

**Table B—Flow Classes**

Column 1	Column 2	Column 3	Column 4	Column 5	Column 6	Column 7
Water source	Management zone	Flow class	Commencement	Flow (ML/day)	Reference point	Day on which flow class applies
Apsley River Water Source		Very Low Flow Class	Year 1 of this Plan	Less than or equal to 1 ML/day	Apsley River at Apsley Falls gauge (206018)	Same day
		A Class		More than 1 ML/day and less than or equal to 16 ML/day		
		B Class		More than 16 ML/day and less than or equal to 39 ML/day		
		C Class		More than 39 ML/day		
Coastal Macleay Water Source	Tidal Management Zone	Very Low Flow Class	Year 1 of this Plan	Less than or equal to 13 ML/day	Macleay River at Turners Flat gauge (206011)	Same day
		A Class		More than 13 ML/day		

		Very Low Flow Class	Year 4 of this Plan	Less than or equal to 19 ML/day	
		A Class		More than 19 ML/day	
		Very Low Flow Class	Year 7 of this Plan	Less than or equal to 30 ML/day	
		A Class		More than 30 ML/day	
Commissioners Waters Source	Commissioners Waters Management Zone	Very Low Flow Class	Year 1 of this Plan	Less than or equal to 1 ML/day	Commissioners Waters at Tiverton (Eathorpe) gauge (206008) Same day
		A Class		More than 1 ML/day and less than or equal to 13 ML/day	
		B Class		More than 13 ML/day	
	Dumaresq Creek Management Zone	Very Low Flow Class	Year 1 of this Plan	Less than or equal to 1 ML/day	Commissioners Waters at Tiverton (Eathorpe) gauge (206008) Same day
		A Class		More than 1 ML/day and less than or equal to 13 ML/day	
		B Class		More than 13 ML/day	
Georges River Water Source		Very Low Flow Class	Year 1 of this Plan	No visible flow	Georges Creek Road Crossing Same day
		A Class		Visible flow	
Hickeys Creek Water Source		Very Low Flow Class	Year 1 of this Plan	No visible flow	Secombs Lane Bridge Same day
		A Class		Visible flow	

Macleay Gorges Water Source	Very Low Flow Class	Year 1 of this Plan	Less than or equal to 13 ML/day	Macleay River downstream of Georges River gauge (206024)	Same day
	A Class		More than 13 ML/day		
Macleay Valley Water Source	Very Low Flow Class	Year 1 of this Plan	Less than or equal to 13 ML/day	Macleay River at Turners Flat gauge (206011)	Same day
	A Class		More than 13 ML/day and less than or equal to 1,014 ML/ day		
	B Class		More than 1,014 ML/ day and less than or equal to 1,419 ML/ day		
	C Class		More than 1,419 ML/ day		Same day
	Very Low Flow Class	Year 4 of this Plan	Less than or equal to 19 ML/day		
	A Class		More than 19 ML/day and less than or equal to 1,014 ML/ day		
	B Class		More than 1,014 ML/ day and less than or equal to 1,419 ML/ day		
	C Class		More than 1,419 ML/ day		

	Very Low Flow Class	Year 7 of this Plan	Less than or equal to 30 ML/day		Same day
	A Class		More than 30 ML/day and less than or equal to 1,014 ML/day		
	B Class		More than 1,014 ML/day and less than or equal to 1,419 ML/day		
	C Class		More than 1,419 ML/day		
Nulla Nulla Creek Water Source	Very Low Flow Class	Year 1 of this Plan	No visible flow	Nulla Creek Road crossing	Same day
	A Class		Visible flow		
Styx River Water Source	Very Low Flow Class	Year 1 of this Plan	Less than or equal to 7 ML/day	Styx River at Jeogla gauge (206001)	Same day
	A Class		More than 7 ML/day and less than or equal to 110 ML/day		
	C Class		More than 110 ML/day		
	Very Low Flow Class	Year 6 of this Plan	Less than or equal to 10 ML/day		Same day

	A Class		More than 10 ML/day and less than or equal to 110 ML/ day		
	C Class		More than 110 ML/ day		
Tia River Water Source	Very Low Flow Class	Year 1 of this Plan	Less than or equal to 2 ML/day	Tia River at Tia River gauge (206009)	Same day
	A Class		More than 2 ML/day and less than or equal to 66 ML/day		
	C Class		More than 66 ML/day		
Warbro Brook Water Source	Very Low Flow Class	Year 1 of this Plan	Less than or equal to 8 ML/day	Macleay River at Turners Flat gauge (206011)	Same day
	A Class		More than 8 ML/day		

**Notes.**

**1** The flow percentiles below refer to critical month flows (November) at the gauge and include all days of record.

(a) For the Macleay River downstream of Georges River gauge (206024), 13 ML/day corresponds to the estimated 97th percentile flow.

(b) For the Macleay River at the Turners Flat gauge (206011):

- (i) 8 ML/day corresponds to a point on the flow duration curve between the estimated 98th and 99th percentile flow, and
- (ii) 13 ML/day corresponds to the estimated 98th percentile flow, and
- (iii) 19 ML/day corresponds to the estimated 97th percentile flow, and
- (iv) 30 ML/day corresponds to the estimated 96th percentile flow, and
- (v) 1,419 ML/day corresponds to the estimated 30th percentile flow.

**2** The flow percentiles below refer to critical month flows (December) at the gauge flows and include all days of record.

(a) For the Apsley River at the Apsley Falls gauge (206018):

- (i) 1 ML/day corresponds to the estimated 82nd percentile flow, and
- (ii) 39 ML/day corresponds to the estimated 30th percentile flow.
- (b) For the Styx River at the Jeogla gauge (206001):
  - (i) 7 ML/day corresponds to the estimated 98th percentile flow, and
  - (ii) 10 ML/day corresponds to the estimated 95th percentile flow.
- (c) For the Tia River at the Tia River gauge (206009), 2 ML/day corresponds to the estimated 97th percentile flow.
- (d) For the Commissioners Waters at Tiverton (Eathorpe) gauge (206008), 1 ML/day corresponds to the estimated 86th percentile flow.

**3** The flow percentiles below refer to average daily flows at the gauge and include all days of record.

- (a) For the Apsley River at the Apsley Falls gauge (206018), 16 ML/day corresponds to the estimated 50th percentile flow.
- (b) For the Tia River at the Tia River gauge (206009), 66 ML/day corresponds to the estimated 50th percentile flow.
- (c) For the Commissioners Waters at Tiverton (Eathorpe) gauge (206008), 13 ML/day corresponds to the estimated 50th percentile flow.
- (d) For the Macleay River at the Turners Flat gauge (206011), 1,014 ML/day corresponds to the estimated 50th percentile flow.
- (e) For the Styx River at the Jeogla gauge (206001), 110 ML/day corresponds to the estimated 50th percentile flow.

**4** *Year 1 of this Plan, Year 4 of this Plan, Year 6 of this Plan* and *Year 7 of this Plan* are defined in the Dictionary.

#### **47 Access rules for the taking of surface water**

- (1) This clause applies to the taking of water under an access licence from these water sources, excluding the taking of water:
  - (a) under an access licence used in association with an aquifer interference activity that is an approved EP&A Act development when:
    - (i) in the Minister's opinion, there are no reasonably practicable measures the access licence holder can take to comply with the access rules under this clause, and
    - (ii) the access licence holder has a water management plan for the aquifer interference activity, that has been approved in accordance with the development consent for the activity under the *Environmental Planning and Assessment Act 1979*, and
    - (iii) the water management plan includes conditions that require the return of water to the water source to mitigate the taking of water during times when the access rules apply under this clause, or
  - (b) under an access licence used in association with an aquifer interference activity when:
    - (i) in the Minister's opinion, there are no reasonably practicable measures the access licence holder can take to comply with the access rules under this clause, and

- (ii) the access licence holder has a water management plan for the aquifer interference activity that has been approved by the Minister, and
- (iii) the water management plan includes conditions that require the return of water to the water source to mitigate the taking of water during times when the access rules apply under this clause, or
- (c) from these upriver alluvial sediments, or
- (d) from the Coastal Macleay Floodplain Alluvial Groundwater Source.

**Note.** *Approved EP&A Act development* is defined in the Dictionary.

- (2) Subject to subclauses (14) and (22), water must not be taken under an access licence with a share component that specifies a water source or an extraction component that specifies a management zone with a Very Low Flow Class that has commenced, when flows in that water source or management zone are in the Very Low Flow Class. This subclause does not apply to the taking of water:

- (a) from an off-river pool, or
- (b) under an access licence with an extraction component that specifies the Dumaresq Creek Management Zone in the Commissioners Waters Water Source at the commencement of this Plan when the Armidale Dumaresq Council water treatment plant is discharging filter water into Dumaresq Creek.

**Note.** *Off-river pool* is defined in the Dictionary.

- (3) Subject to subclause (22), water must not be taken under an access licence when there is no visible flow at the location at which water is proposed to be taken. This subclause does not apply to the taking of water from an in-river pool or an off-river pool.

**Note.** *In-river pool* and *visible flow* are defined in the Dictionary.

- (4) Subject to subclause (22), water must not be taken under an access licence from an off-river pool when the volume of water in that pool is less than the full capacity of the pool.

**Note.** *Full capacity* is defined in the Dictionary.

- (5) Subject to subclause (22), in water sources where flow classes have not commenced, water must not be taken under an access licence from an in-river pool when the volume of water in that pool is less than the full capacity of the pool.
- (6) Subject to subclause (22), water must not be taken under an access licence with a share component that specifies the Yarrowitch River Water Source when the water level is less than or equal to 0.29 metres on the gauging plate located at Yarrobindi Bridge, near Lot 7008 DP 1125260.

**Note.** At the commencement of this Plan, the Department assessed that when the water level was equal to the point indicated on the gauging plate located at Yarrobindi Bridge, there was approximately 3 ML/day of water flowing past that point.

- (7) Water must not be taken under an access licence specified in Column 1 of the table in Schedule 1 with a share component that specifies the water source in Column 2 of the table in Schedule 1 in contradiction of the access rule specified in Column 3 of the table in Schedule 1.



**Note.** Those former [Water Act 1912](#) entitlements and the cease to take conditions that have been identified as being higher than the upper limit of the relevant Very Low Flow Class or the access rules specified in subclauses (2)–(5), (11)–(13) and (15) are listed in Schedule 1.

- (8) The cease to take condition that arises from subclause (7) applies to all water supply works that are nominated by the access licence following a dealing under section 71S or 71W of the Act.

**Notes.**

**1** This will include, for example, all water supply works that are nominated by the access licence following a dealing under section 71S or 71W of the Act.

**2** **Cease to take condition** is defined in the Dictionary.

- (9) Water must not be taken under an access licence specified in Column 1 of the table in Schedule 2, with a share component that specifies the water source in Column 2 of the table in Schedule 2, in contradiction of the access rule specified in Column 3 of the table in Schedule 2.

- (10) The cease to take condition that arises from subclause (9) only applies to water supply works that were nominated by the access licence at the commencement of this Plan.

- (11) Subject to subclause (22), water must not be taken under an access licence with a share component that specifies the Apsley River Water Source for more than eight hours/day when the flow in the Apsley River at Apsley Falls gauge (206018) is less than or equal to 5 ML/day. This subclause does not apply to the taking of water from an off-river pool.

- (12) Subject to subclause (22), water must not be taken under an access licence with an extraction component that specifies the Commissioners Waters Management Zone or the Dumaresq Creek Management Zone of the Commissioners Waters Water Source:

- (a) for more than eight hours/day when flows in the Commissioners Waters at Tiverton (Eathorpe) gauge (206008) are less than or equal to 5 ML/day, and
- (b) for more than twelve hours/day when flows in the Commissioners Waters at Tiverton (Eathorpe) gauge (206008) are greater than 5 ML/day and less than or equal to 9 ML/day.

This subclause does not apply to the taking of water from an off-river pool.

- (13) Subject to subclause (22), water must not be taken under an access licence with a share component that specifies the Macleay Valley Water Source or the Warbro Brook Water Source:

- (a) for more than six hours/day when flows in the Macleay River at the Turners Flat gauge (206011) are less than or equal to 40 ML/day, and
- (b) for more than ten hours/day when flows in the Macleay River at the Turners Flat gauge (206011) are more than 40 ML/day and less than or equal to 60 ML/day.

This subclause does not apply to the taking of water from an off-river pool or the taking of water under a local water utility access licence in the Macleay Valley Water Source.

- (14) Water must not be taken under a local water utility access licence with a share component that specifies the Macleay Valley Water Source and applied to the Sherwood borefield recharge channel when:

- (a) the volume of water in Stuart McIntyre Dam is greater than or equal to 60% of the dam's storage capacity, and

- (b) flow in the Macleay River at Turners Flat gauge (206011) is less than or equal to 30 ML/day.

**Notes.**

**1** At the commencement of this Plan, the storage capacity of Steuart McIntyre Dam is estimated to be 2,500 ML and 60% of the storage capacity is estimated to equate to 1,500 ML.

**2** When Steuart McIntyre Dam is less than 60% of dam storage capacity, Kempsey Shire Council may transfer water to the Sherwood borefield recharge channel to provide town water supplies to Kempsey.

- (15) Subject to subclause (22), water must not be taken under an access licence with a share component that specifies the Tia River Water Source for more than eight hours/day when the flow in the Tia River at Tia River gauge (206009) is less than or equal to 10 ML/day. This subclause does not apply to the taking of water from an off-river pool.
- (16) Water must not be taken under an unregulated river (“Aboriginal community development”) access licence with a share component that specifies one of the following water sources when flows in that water source are in the Very Low Flow Class or A Class:
  - (a) Apsley River Water Source,
  - (b) Commissioners Waters Water Source,
  - (c) Macleay Valley Water Source,
  - (d) Styx River Water Source,
  - (e) Tia River Water Source.
- (17) Water must not be taken under an unregulated river (“Aboriginal community development”) access licence with a share component that specifies the Chandler River Water Source when flows in the Wollomombi River at Conninside gauge (206014) are less than or equal to 14 ML/day.
- (18) Water must not be taken under an unregulated river (“Aboriginal community development”) access licence with a share component that specifies the Oaky River Water Source when flows in the Styx River at Jeogla gauge (206001) are less than or equal to 110 ML/day.
- (19) Water must not be taken under an unregulated river (high flow) access licence with a share component that specifies the Apsley River Water Source or the Macleay Valley Water Source when flows in that water source are in the Very Low Flow Class, A Class or B Class.
- (20) Water must not be taken under an access licence with a share component that specifies one of these water sources from:
  - (a) an in-river dam pool, or
  - (b) a runoff harvesting dam pool,

created by a structure authorised by a water supply work approval, when flows or storage levels in that pool are at or less than a cease to take condition that was specified on the [Water Act 1912](#) entitlement that the access licence replaces. This subclause does not apply to the taking of water under an access licence listed in Schedule 2 of this Plan.

**Note.** *In-river dam pool* and *runoff harvesting dam* are defined in the Dictionary.

(21) Water must not be taken in these water sources from an in-river dam pool unless the in-river dam is:

- (a) constructed, operated and maintained in accordance with any conditions specified on the water supply work approval for the in-river dam, and
- (b) passing such flows in such circumstances as are specified on the water supply work approval for the in-river dam.

**Note.** *In-river dam* is defined in the Dictionary.

(22) Subclauses (2)–(5), (11)–(13) and (15) do not apply to the following:

- (a) the taking of water under an access licence or an access licence which replaces a *Water Act 1912* entitlement to which clause 1 of Schedule 3 applies, for any of the following purposes, provided that the volume of water taken does not exceed 20 kilolitres per day per access licence or such lower amount specified in accordance with subclause (23):
  - (i) fruit washing,
  - (ii) cleaning of dairy plant and equipment for the purpose of hygiene,
  - (iii) poultry watering and misting,
  - (iv) cleaning of enclosures used for intensive animal production for the purposes of hygiene,
- (b) the taking of water for domestic consumption only under a domestic and stock access licence or a domestic and stock (subcategory “domestic”) access licence that existed at the commencement of this Plan and with a share component that specifies one of these water sources, excluding the Apsley River Water Source, the Commissioners Waters Water Source and the Toorumbbee Creek Water Source, provided that the volume of water taken does not exceed 1 kilolitre per house supplied by the access licence per day,
- (c) the taking of water for domestic consumption only under a domestic and stock access licence or a domestic and stock (subcategory “domestic”) access licence:
  - (i) that existed at the commencement of the *Water Sharing Plan for the Apsley River Water Source 2003*, the *Water Sharing Plan for the Commissioners Waters Water Source 2003* and the *Water Sharing Plan for the Toorumbbee Creek Water Source 2003*, and
  - (ii) with a share component that specifies the Apsley River Water Source, the Commissioners Waters Water Source and the Toorumbbee Creek Water Source,provided that the volume of water taken does not exceed 1 kilolitre per house supplied by the access licence per day,

**Note.** The *Water Sharing Plan for the Apsley River Water Source 2003*, the *Water Sharing Plan for the Commissioners Waters Water Source 2003* and the *Water Sharing Plan for the Toorumbbee Creek Water Source 2003* commenced on 1 July 2004.
- (d) the taking of water for stock watering only under a domestic and stock access licence or a domestic and stock (subcategory “stock”) access licence:
  - (i) that existed at the commencement of this Plan, and

- (ii) with a share component that specifies one of these water sources, excluding the Apsley River Water Source, the Commissioners Waters Water Source and the Toorumbec Creek Water Source,

until Year 4 of this Plan, provided that the volume of water taken does not exceed 14 litres per hectare of grazeable area per day,

**Note.** *Grazeable area* is defined in the Dictionary.

- (e) the taking of water using a runoff harvesting dam or from an in-river dam pool,
  - (f) the taking of water under a local water utility access licence or an access licence of the subcategory “Town water supply” to which clause 2 of Schedule 3 applies,
  - (g) the taking of water under an access licence to which clause 3 of Schedule 3 applies,
  - (h) the taking of water under an access licence to which Schedule 1 applies.
- (23) The Minister may reduce the maximum daily volume limit imposed by the rule under subclause (22) (a) for an access licence if the Minister is satisfied that the reduced volume is satisfactory to meet the relevant purpose referred to in that subclause.

**Note.** The method by which the Minister can reduce the maximum daily volume limit is by amending the mandatory conditions of the relevant water supply work approval. Under section 102 (3) of the Act, the mandatory conditions of an approval may be imposed, amended, revoked or suspended by the Minister whenever it is necessary to do so in order to enable compliance with or to give effect to a relevant management plan.

#### **48 Access rules for the taking of groundwater in the Macleay Valley Water Source**

- (1) The rules in this clause apply to the taking of groundwater under a local water utility access licence with a share component that specifies the Macleay Valley Water Source.
- (2) When the volume of water in the Steuart McIntyre Dam is greater than 60% of the dam’s storage capacity and flow in the Macleay River at Turners Flat gauge (206011) is:
  - (a) equal to or greater than 235 ML/day, water must not be taken under a local water utility access licence in an amount greater than 32 ML/day, or
  - (b) less than 235 ML/day, water must not be taken under a local water utility access licence in an amount greater than 8.5 ML/day.

**Note.** Clause 47 (14) specifies rules during which pumping from the Macleay River to the Sherwood borefield recharge channel is prohibited.

- (3) Subject to subclause (4), when the volume of water in the Steuart McIntyre Dam is equal to or less than 60% of the dam’s storage capacity and the flow in the Macleay River at Turners Flat gauge (206011) is:
  - (a) equal to or greater than 235 ML/day, water must not be taken under a local water utility access licence in an amount greater than 32 ML/day, or
  - (b) less than 235 ML/day and equal to or greater than 62 ML/day, water must not be taken under a local water utility access licence in an amount greater than 20 ML/day, or

- (c) less than 62 ML/day, water must not be taken under a local water utility access licence in an amount greater than 8.5 ML/day.
- (4) Pursuant to subclause (3) (c), water must not be taken under a local water utility access licence in an amount greater than 8.5 ML/day when the volume of water in the Steuart McIntyre Dam is equal to or less than 60% of the dam's storage capacity unless water restrictions are in place for Kempsey Shire.

**Note.** At the commencement of this Plan, the storage capacity of Steuart McIntyre Dam is estimated to be 2,500 ML and 60% of the storage capacity is estimated to equate to 1,500 ML.

#### 49 Total daily extraction limits

At the commencement of this Plan, there are no total daily extraction limits (TDELs) established for access licences in these water sources.

**Notes.**

- 1 TDELs are an assessment tool only and will be used by the Department to determine which access licences (if any) may require individual daily extraction limits. Where TDELs have been established, continued exceedance of a TDEL may result in the imposition of individual daily extraction limits under clause 50.
- 2 **Total daily extraction limits** is defined in the Dictionary.

#### 50 Individual daily extraction limits

- (1) At the commencement of this Plan, there are no individual daily extraction limits (IDELs) established for access licences in these water sources.
- (2) If the Minister is satisfied that an assessment of daily extraction under access licences for which a TDEL is established under clause 49 indicates that extraction under the access licences exceeds the TDEL, the Minister may amend the extraction component of an access licence under section 68A of the Act to impose an IDEL on any one or more of those access licences.

**Note.** *Individual daily extraction limits* is defined in the Dictionary.

### Part 10 Rules for water supply work approvals

**Notes.**

- 1 This Part is made in accordance with sections 5, 21 and 95 of the Act.
- 2 Part 13 allows for amendments to be made to this Part.

#### Division 1 Rules applying to the granting or amending of water supply work approvals for water supply works that take surface water

##### 51 General

The rules in this Division apply to water supply work approvals for water supply works authorised to take water:

- (a) occurring naturally on the surface of the ground within the boundaries of these connected water sources, and
- (b) in rivers, lakes, estuaries and wetlands within the boundaries of these connected water sources.

**Note.** The rules in this Division apply to all water supply works except those water supply works that may be used to take water from these upriver alluvial sediments or the Coastal Macleay Floodplain Alluvial Groundwater Source.

## 52 Granting or amending water supply work approvals

- (1) A water supply work approval must not be granted or amended to authorise an in-river dam on a third order or higher stream within the following water sources or trading zones:
- (a) Coastal Macleay Water Source,
  - (b) Georges River Water Source,
  - (c) Green Gully Water Source,
  - (d) Stockyard Creek Water Source,
  - (e) Styx River Water Source,
  - (f) Tia River Water Source,
  - (g) the Upstream Trading Zone in the Dungay Creek Water Source,
  - (h) the Upstream Trading Zone in the Euroka Creek Water Source.

### Notes.

**1** Trading zones are established under clause 61 of this Plan.

**2** Water supply work approvals may be granted or amended for in-river dams on third order or higher streams within all water sources and management zones to which this Plan applies, other than those specified in subclause (1), consistent with the NSW Weirs Policy, the principles of the Act, the [Fisheries Management Act 1994](#) and any other relevant legislation.

**3** **Trading zone** is defined in the Dictionary.

- (2) If the sum of the share components of access licences nominating a water supply work that is a runoff harvesting dam or an in-river dam is reduced via:
- (a) a dealing, or
  - (b) the surrender under section 77 of the Act of an access licence and then the subsequent cancellation of that access licence under section 77A (6) of the Act, or
  - (c) the amendment of the share component of the access licence by the Minister under section 68A of the Act, or
  - (d) the cancellation of an access licence under section 78 of the Act or via the compulsory acquisition of an access licence under section 79 of the Act,

the Minister may require the modification of the dam to ensure that the capability of the dam to capture water is reduced to reflect that reduction in share component.

**Note.** The Minister can require the modification of the dam by amending the mandatory conditions of the relevant water supply work approval. Under section 102 (3) of the Act, the mandatory conditions of an approval may be imposed, amended, revoked or suspended by the Minister whenever it is necessary to do so in order to enable compliance with or to give effect to a relevant management plan.

## **Division 2 Rules applying to the granting or amending of water supply work approvals for water supply works that take groundwater**

### **53 General**

- (1) The rules in this Division apply to water supply work approvals for water supply works that are authorised to take water from:
  - (a) these upriver alluvial sediments, and
  - (b) the Coastal Macleay Floodplain Alluvial Groundwater Source.
- (2) In this Division, a reference to a water supply work is limited to a water supply work that is authorised to take water from:
  - (a) these upriver alluvial sediments, and
  - (b) the Coastal Macleay Floodplain Alluvial Groundwater Source.

### **54 Rules to minimise interference between water supply works**

- (1) A water supply work approval must not be granted or amended to authorise the construction of a water supply work which, in the Minister's opinion, is or is proposed to be located within:
  - (a) 200 metres of a water supply work located on another landholding that is authorised to take water from these water sources and is nominated by another access licence, or
  - (b) 200 metres of a water supply work located on another landholding that is authorised to take water from these water sources pursuant to basic landholder rights only, or
  - (c) 100 metres from the boundary of the landholding on which the water supply work is located, unless the owner of the landholding adjoining the boundary has provided consent in writing, or
  - (d) 500 metres of a water supply work that is authorised to take water from these water sources and is nominated by a local water utility access licence or a major utility access licence, unless the local water utility or major utility has provided consent in writing, or
  - (e) 100 metres of a Department observation or monitoring bore, unless the Minister has provided consent in writing.
- (2) The distance restrictions specified in subclause (1) do not apply to the grant or amendment of a water supply work approval if the Minister is satisfied that:
  - (a) the water supply work is solely for basic landholder rights, or
  - (b) the water supply work is a replacement groundwater work, or
  - (c) the water supply work is for the purpose of monitoring, environmental management or remedial works, or
  - (d) the location of the water supply work at a lesser distance would result in no more than minimal impact on existing extractions within these water sources.

- (3) For the purpose of subclause (2) (d), the Minister may require the applicant to submit a hydrogeological study to demonstrate to the Minister's satisfaction that the location of the water supply work at a lesser distance will result in no more than minimal impact on existing extractions within these water sources.
- (4) The Minister may require the modification of a water supply work authorised under subclause (2) (d) to minimise the impact of the water supply work on existing water levels or extraction if the Minister is satisfied at a later time that the location of the water supply work is causing more than minimal impact on existing water levels or extraction.

#### **55 Rules for water supply works located near contamination sources**

- (1) A water supply work approval must not be granted or amended to authorise the construction of a water supply work which, in the Minister's opinion, is or is proposed to be located:
  - (a) within 250 metres of the plume associated with a contamination source listed in Schedule 4, or
  - (b) between 250 metres and 500 metres from the plume associated with a contamination source listed in Schedule 4, unless the Minister is satisfied that no drawdown of water will occur within 250 metres of that plume.

**Note.** *Drawdown* is defined in the Dictionary.

- (2) In addition to subclause (1), a water supply work approval must not be granted or amended to authorise the construction of a water supply work which, in the Minister's opinion, is or is proposed to be located at a distance from a plume associated with a contamination source listed in Schedule 4 that is likely to be insufficient to protect the water source or public health and safety.
- (3) The distance restrictions specified in subclause (1) do not apply to the grant or amendment of a water supply work approval if the Minister is satisfied that:
  - (a) the proposed distance is adequate to protect the water source, the environment and public health and safety, or
  - (b) the water supply work is for the purpose of monitoring, environmental management or remedial works.
- (4) For the purpose of subclause (3) (a), the Minister may require the applicant to submit a hydrogeological study to demonstrate to the Minister's satisfaction that the location of the water supply work at a lesser distance would result in no greater impact on the water source, the environment and public health and safety.

#### **56 Rules for water supply works located near groundwater-dependent ecosystems**

- (1) High priority groundwater-dependent ecosystems within these water sources are shown on [the Plan Map](#).
- (2) A water supply work approval must not be granted or amended to authorise the construction of a water supply work which, in the Minister's opinion, is or is proposed to be located within:
  - (a) 100 metres of a high priority groundwater-dependent ecosystem shown on [the Plan Map](#), or



- (b) 400 metres of a high priority groundwater-dependent ecosystem shown on [the Plan Map](#), unless:
  - (i) the water supply work is authorised to take water pursuant to basic landholder rights only, or
  - (ii) the water supply work approval includes a condition providing that the water supply work must not be used to take more than 20 ML in any water year, or
- (c) 800 metres of a high priority groundwater-dependent ecosystem shown on [the Plan Map](#), unless:
  - (i) the water supply work is authorised to take water pursuant to basic landholder rights only, or
  - (ii) the water supply work approval includes a condition providing that the water supply work must not be used to take more than 100 ML in any water year, or
- (d) 500 metres of a high priority karst environment groundwater-dependent ecosystem shown on [the Plan Map](#), or
- (e) 100 metres from the top of an escarpment, or
- (f) 40 metres of the top of the high bank of a river.

**Note.** *Karst environment* is defined in the Dictionary.

- (3) In addition to subclause (2), a water supply work approval must not be granted or amended to authorise the construction of a water supply work which, in the Minister's opinion, is or is proposed to be located at a distance from a high priority groundwater-dependent ecosystem or a high priority karst environment groundwater-dependent ecosystem shown on [the Plan Map](#) if the construction or use of the water supply work at that distance is likely to cause more than minimal drawdown of that high priority groundwater-dependent ecosystem or a high priority karst environment groundwater-dependent ecosystem. This subclause does not apply to water supply works that take, or that are proposed to take water pursuant to basic landholder rights only.
- (4) The distance restrictions specified in subclause (2) (a)–(d) do not apply to the grant or amendment of a water supply work approval if the Minister is satisfied that no more than minimal drawdown of water will occur at the perimeter of any high priority groundwater-dependent ecosystem or a high priority karst environment groundwater-dependent ecosystem shown on [the Plan Map](#).
- (5) The distance restrictions specified in subclause (2) do not apply to the grant or amendment of a water supply work approval if the Minister is satisfied that:
  - (a) the water supply work is for the purpose of monitoring, environmental management or remedial works, or
  - (b) the water supply work replaces an existing authorised water supply work that is part of a bore network for a major utility or a local water utility for the purpose of town water supply, or

- (c) the water supply work is a replacement groundwater work, or
  - (d) the location of the water supply work at a lesser distance would result in no greater impact on these water sources and their groundwater-dependent ecosystems.
- (6) The Minister may require the applicant to submit a hydrogeological study, to demonstrate to the Minister's satisfaction that:
- (a) for the purpose of subclause (4), no more than minimal drawdown of water will occur at the perimeter of any high priority groundwater-dependent ecosystem or a high priority karst environment groundwater-dependent ecosystem shown on [the Plan Map](#), or
  - (b) for the purpose of subclause (5) (d), the location of the water supply work at a lesser distance will result in no greater impact on these water sources and their groundwater-dependent ecosystems.

#### **57 Rules for water supply works located near potential acid sulfate soils**

- (1) A water supply work approval must not be granted within an area classed as having a high probability of occurrence of acid sulfate soils on an Acid Sulfate Soil Risk Map maintained by the NSW Office of Environment & Heritage.
- (2) Subclause (1) does not apply to the grant or amendment of a water supply work approval if the Minister is satisfied that the location of the water supply work would not result in a significant risk of acidification of these water sources.
- (3) For the purposes of subclause (2), the Minister may require the applicant to submit a hydrogeological study to demonstrate that construction of a water supply work within an area classed as having a high probability of occurrence of acid sulfate soils would not, in the Minister's opinion, result in acidification of these water sources.

**Notes.**

**1** Acid sulfate soils is defined in the dictionary.

**2** At the commencement of this Plan, information on Acid Sulfate Soil Risk Maps can be found at the following address on the website of the NSW Office of Environment and Heritage:  
<http://www.environment.nsw.gov.au/acidsulfatesoil/riskmaps.htm>.

#### **58 Rules for water supply works located near groundwater-dependent culturally significant sites**

- (1) A water supply work approval must not be granted or amended to authorise the construction of a water supply work which, in the Minister's opinion, is or is proposed to be located within:
  - (a) 100 metres of a groundwater-dependent culturally significant site, in the case of a water supply work that will be authorised to take water pursuant to basic landholder rights only, or
  - (b) 200 metres of a groundwater-dependent culturally significant site, in the case of a water supply work that will be nominated by an access licence.

**Note.** Groundwater-dependent culturally significant sites are currently under investigation and may be identified during the term of this Plan. The full list of potential groundwater-dependent culturally significant sites will be identified in the Aboriginal Water Initiative System (AWIS) and, as a precautionary approach, will be considered by staff in the assessment of any application for a water supply work approval within the area of this Plan.

- (2) The distance restrictions specified in subclause (1) do not apply to the grant or amendment of a

water supply work approval if the Minister is satisfied that:

- (a) the water supply work is for the purpose of monitoring, environmental management or remedial works, or
  - (b) the water supply work replaces an existing authorised water supply work that is part of a bore network for a major utility or a local water utility for the purpose of town water supply, or
  - (c) the water supply work is a replacement groundwater work, or
  - (d) the location of the water supply work at a lesser distance will result in no more than minimal impact on these water sources and their groundwater-dependent culturally significant sites.
- (3) For the purpose of subclause (2) (d), the Minister may require the applicant to submit a hydrogeological study to demonstrate to the Minister's satisfaction that the location of the water supply work at a lesser distance will result in no greater impact on these water sources and their groundwater-dependent culturally significant sites.

## **59 Replacement groundwater works**

- (1) For the purposes of this Plan, replacement groundwater work means a water supply work that replaces an existing water supply work constructed and used for the purpose of taking water from these upriver alluvial sediments and the Coastal Macleay Floodplain Alluvial Groundwater Source where:
- (a) the existing water supply work is authorised by a water supply work approval under the Act, and
  - (b) the replacement groundwater work is to be constructed to extract water from the same water source as the existing water supply work, and
  - (c) the replacement groundwater work is to be constructed to extract water from:
    - (i) the same depth as the existing water supply work, or
    - (ii) a different depth if the Minister is satisfied that doing so will result in no greater impact on a water source or its dependent ecosystems, and
  - (d) the replacement groundwater work is to be located:
    - (i) within 20 metres of the existing water supply work, or
    - (ii) more than 20 metres from the existing water supply work if the Minister is satisfied that doing so will result in no greater impact on a water source or its dependent ecosystems, and
  - (e) if the existing water supply work is located within 40 metres of the high bank of a river, the replacement groundwater work is to be located:
    - (i) within 20 metres of the existing water supply work but no closer to the high bank of the river, or
    - (ii) more than 20 metres from the existing water supply work but no closer to the high bank

of the river if the Minister is satisfied that doing so will result in no greater impact on a water source or its dependent ecosystems, and

- (f) the replacement groundwater work must not have a greater internal diameter or excavation footprint than the existing water supply work, except where the internal diameter of the casing of the existing water supply work is no longer manufactured, in which case the internal diameter of the replacement groundwater work is to be no greater than 110% of the internal diameter of the existing water supply work it replaces. For the purposes of this paragraph, **internal diameter** means the diameter of the inside of the casing of the water supply work which is a water bore and **excavation footprint** means the authorised dimensions of a water supply work which is an unlined excavation constructed for the purposes of water supply only.
- (2) For the purpose of subclause (1) (c) (ii), the Minister may require the applicant to submit a hydrogeological study to demonstrate to the Minister's satisfaction that the construction of the water supply work at a different depth to the existing water supply work will result in no greater impact on a water source or its dependent ecosystems.
- (3) For the purpose of subclause (1) (d) (ii) or (e) (ii), the Minister may require the applicant to submit a hydrogeological study to demonstrate to the Minister's satisfaction that the location of the water supply work at a distance greater than 20 metres from the existing water supply work will result in no greater impact on a water source or its dependent ecosystems.

**Note.** The Minister may amend an approval on the application of the holder of the approval, under section 107 of the Act. The operation of section 107 (3) of the Act may further restrict the replacement of an existing water supply work.

## **Division 3 Rules for the use of water supply works used to take groundwater**

### **60 Rules for the use of water supply works located within restricted distances**

- (1) The rules in this clause apply to water supply work approvals for water supply works that are authorised to take water from:
  - (a) these upriver alluvial sediments, and
  - (b) the Coastal Macleay Floodplain Alluvial Groundwater Source.
- (2) Subject to subclauses (3) and (5), a water supply work that is located within a restricted distance specified in clauses 54, 55, 56 (2) (a) and (d)–(f), 57 and 58 must not, in any water year, be used to take more water than the volume of water that is equal to:
  - (a) the sum of the share components of the access licences nominating that water supply work at the commencement of this Plan, plus
  - (b) the maximum water allocation that can be carried over by access licences nominating that water supply work at the commencement of this Plan in accordance with:
    - (i) clause 42 (4) for access licences with a share component that specifies one of these connected water sources, excluding the Apsley River Water Source, the Commissioners Waters Water Source and the Toorumbie Creek Water Source, or

- (ii) clause 43 (5) for access licences with a share component that specifies the Apsley River Water Source, the Commissioners Waters Water Source or the Toorumbree Creek Water Source.
- (3) Subject to subclause (5), a water supply work that becomes located within a restricted distance specified in clauses 54, 55, 56 (2) (a) and (d)–(f), 57 and 58 as a result of an amendment to this Plan must not, in any water year, be used to take more water than the volume of water that is equal to:
  - (a) the sum of the share components of the access licences nominating that water supply work at the commencement of this Plan, plus
  - (b) the maximum water allocation that can be carried over by access licences nominating that water supply work at the date of the amendment in accordance with:
    - (i) clause 42 (4) for access licences with a share component that specifies one of these connected water sources, excluding the Apsley River Water Source, the Commissioners Waters Water Source and the Toorumbree Creek Water Source, or
    - (ii) clause 43 (5) for access licences with a share component that specifies the Apsley River Water Source, the Commissioners Waters Water Source or the Toorumbree Creek Water Source.
- (4) Subject to subclause (5), a water supply work that is located within a restricted distance specified in clause 56 (2) (b) and (c) at the commencement of this Plan, must not, in any water year, be used to take more water than the volume of water that is equal to the greater of:
  - (a) the sum of the share components of the access licences nominating that water supply work at the commencement of this Plan plus the maximum water allocation that can be carried over by access licences nominating that water supply work at the commencement of this Plan in accordance with:
    - (i) clause 42 (4) for access licences with a share component that specifies one of these connected water sources, excluding the Apsley River Water Source, the Commissioners Waters Water Source and the Toorumbree Creek Water Source, or
    - (ii) clause 43 (5) for access licence with a share component that specifies the Apsley River Water Source, the Commissioners Waters Water Source or the Toorumbree Creek Water Source, or
  - (b) 20 ML/year if the water supply work is located within 400 metres of a high priority groundwater-dependent ecosystem shown on [the Plan Map](#), or
  - (c) 100 ML/year if the water supply work is located within 800 metres of a high priority groundwater-dependent ecosystem shown on [the Plan Map](#).
- (5) Subclauses (2), (3) and (4) do not apply:
  - (a) where a restricted distance does not apply in accordance with clauses 54 (2) (a), (c) and (d), 55 (3), 56 (4) and (5) (a), (b) and (d), 57 (2) and 58 (2) (a) (b) and (d), or
  - (b) to the taking of water pursuant to basic landholder rights.

- (6) The Minister may specify a daily rate or an annual volumetric limit for water taken by a water supply work that is located within a restricted distance specified in clauses 54–58 pursuant to clauses 54 (2) (d), 55 (3) (a), 56 (4) or (5) (d), 57 (2) or 58 (2) (d).
- (7) The daily rate or annual volumetric limit specified under subclause (6) will be as determined by the Minister to meet the relevant criteria specified in clauses 54 (2) (d), 55 (3) (a), 56 (4) or (5) (d), 57 (2) or 58 (2) (d).

## **Part 11 Access licence dealing rules**

### **61 General**

- (1) The access licence dealing rules established in this Part apply to all access licence dealings in these water sources.
- (2) This Plan establishes the following trading zones located in the following water sources:
  - (a) Dungay Creek Water Source:
    - (i) Upstream Trading Zone, and
    - (ii) Downstream Trading Zone,
  - (b) Euroka Creek Water Source:
    - (i) Upstream Trading Zone, and
    - (ii) Downstream Trading Zone.
- (3) The trading zones in subclause (2) are shown on [the Plan Map](#).

#### **Notes.**

- 1** Access licence dealings in these water sources are subject to the provisions of the Act, the regulations, the access licence dealing principles and the access licence dealing rules established under this Part.
- 2** The access licence dealing principles prevail over the access licence dealing rules in this Plan to the extent of any inconsistency, as provided under section 71Z (3) of the Act.

### **62 Conversion of access licence to new category**

- (1) Dealings under section 71O of the Act are prohibited unless the conversion is from:
  - (a) an unregulated access licence with a share component that specifies one of the following water sources to an aquifer access licence:
    - (i) Christmas Creek Water Source,
    - (ii) Coastal Macleay Water Source,
    - (iii) Collombatti Creek Water Source,
    - (iv) Dungay Creek Water Source,
    - (v) Five Day Creek Water Source,
    - (vi) Georges River Water Source,

- (vii) Gills Bridge Creek Water Source,
- (viii) Hickeys Creek Water Source,
- (ix) Macleay Gorges Water Source,
- (x) Macleay Valley Water Source,
- (xi) Mungay Creek Water Source,
- (xii) Nulla Nulla Creek Water Source,
- (xiii) Stockyard Creek Water Source,
- (xiv) Toorumbree Creek Water Source,
- (xv) Warbro Brook Water Source, or
- (b) an unregulated river access licence with a share component that specifies one of the following water sources to an unregulated river (high flow) access licence:
  - (i) Apsley River Water Source,
  - (ii) Macleay Valley Water Source.
- (2) A dealing under subclause (1) (a) is subject to the share component of the aquifer access licence being equal to the share component of the unregulated river access licence.
- (3) A dealing under subclause (1) (b) is subject to:
  - (a) the share component of the unregulated river (high flow) access licence being equal to 5 times the share component of the unregulated river access licence, and
  - (b) the total amount of unregulated river (high flow) access licence not exceeding:
    - (i) 429 unit shares in the Apsley River Water Source, and
    - (ii) 5,000 unit shares in the Macleay Valley Water Source.

### **63 Assignments of rights dealings**

- (1) Dealings under section 71Q of the Act within the same water source are prohibited in these water sources if the dealing involves an assignment of rights from:
  - (a) an access licence with an extraction component that specifies the Tidal Management Zone in the Coastal Macleay Water Source to an access licence with an extraction component that specifies the Non-Tidal Management Zone in the Coastal Macleay Water Source, if it would cause the sum of the share components of all access licences in the Non-Tidal Management Zone to exceed the sum of the share components of all access licences in the Non-Tidal Management Zone at the commencement of this Plan, or
  - (b) an access licence with an extraction component that specifies the Non-Tidal Management Zone in the Coastal Macleay Water Source to an access licence with an extraction component that specifies the Tidal Management Zone in the Coastal Macleay Water Source,

- if it would cause the sum of the share components of all access licences in the Tidal Management Zone to exceed the sum of the share components of all access licences in the Tidal Management Zone at the commencement of this Plan plus 500, or
- (c) an access licence that does not nominate a water supply work located in the Upstream Trading Zone in the Dungay Creek Water Source to an access licence that nominates a water supply work located in the Upstream Trading Zone of the Dungay Creek Water Source, or
  - (d) an access licence that does not nominate a water supply work located in the Downstream Trading Zone in the Dungay Creek Water Source to an access licence that nominates a water supply work located in the Downstream Trading Zone in the Dungay Creek Water Source, if it would cause the sum of the share components of all access licences in the Downstream Trading Zone to exceed the sum of the share components of all access licences in the Downstream Trading Zone at the commencement of this Plan, or
  - (e) an access licence that does not nominate a water supply work located in the Upstream Trading Zone in the Euroka Creek Water Source to an access licence that nominates a water supply work located in the Upstream Trading Zone of the Euroka Creek Water Source, or
  - (f) an access licence that does not nominate a water supply work located in the Downstream Trading Zone in the Euroka Creek Water Source to an access licence that nominates a water supply work located in the Downstream Trading Zone in the Euroka Creek Water Source, if it would cause the sum of the share components of all access licences in the Downstream Trading Zone to exceed the sum of the share components of all access licences in the Downstream Trading Zone at the commencement of this Plan plus 15.
- (2) Dealings under section 71Q of the Act between water sources within the same water management area are prohibited in these water sources if the dealing involves an assignment of rights:
- (a) to an access licence with a share component that specifies a water source located in a different extraction management unit, or
  - (b) to an access licence with a share component that specifies one of the following water sources:
    - (i) Dyke River Water Source,
    - (ii) Georges River Water Source,
    - (iii) Gills Bridge Creek Water Source,
    - (iv) Green Gully Water Source,
    - (v) Kunderang Brook Water Source,
    - (vi) Stockyard Creek Water Source,
    - (vii) Styx River Water Source,
    - (viii) Toorumbie Creek Water Source,



- (ix) Coastal Macleay Floodplain Alluvial Groundwater Source, or
- (c) to an access licence with a share component that specifies the Apsley River Water Source, if it would cause the sum of the share components of all access licences in the Apsley River Water Source to exceed 326, or
- (d) to an access licence with a share component that specifies the Bakers Creek Water Source, if it would cause the sum of the share components of all access licences in the Bakers Creek Water Source to exceed 195, or
- (e) to an access licence with a share component that specifies the Blue Mountain Creek Water Source, if it would cause the sum of the share components of all access licences in the Blue Mountain Creek Water Source to exceed 253, or
- (f) to an access licence with a share component that specifies the Chandler River Water Source, if it would cause the sum of the share components of all access licences in the Chandler River Water Source to exceed 301, or
- (g) to an access licence with a share component that specifies the Christmas Creek Water Source, if it would cause the sum of the share components of all access licences in the Christmas Creek Water Source to exceed 40, or
- (h) to an access licence with a share component that specifies the Coastal Macleay Water Source, if it would cause the sum of the share components of all access licences in the Non-Tidal Management Zone to exceed the sum of the share components of all access licences in the Non-Tidal Management Zone at the commencement of this Plan, or
- (i) to an access licence with a share component that specifies the Coastal Macleay Water Source, if it would cause the sum of the share components of all access licences in the Tidal Management Zone to exceed the sum of the share components of all access licences in the Tidal Management Zone at the commencement of this Plan plus 500, or
- (j) to an access licence with a share component that specifies the Collombatti Creek Water Source, if it would cause the sum of the share components of all access licences in the Collombatti Creek Water Source to exceed 67, or
- (k) to an access licence with a share component that specifies the Commissioners Waters Water Source, if it would cause the sum of the share components of all access licences in the Commissioners Waters Water Source to exceed 2,166, or
- (l) to an access licence that nominates a water supply work located in the Upstream Trading Zone in the Dungay Creek Water Source, or
- (m) to an access licence with a share component that specifies the Dungay Creek Water Source, if it would cause the sum of the share components of all access licences in the Downstream Trading Zone to exceed the sum of the share components of all access licences in the Downstream Trading Zone at the commencement of this Plan, or
- (n) to an access licence that nominates a water supply work located in the Upstream Trading Zone in the Euroka Creek Water Source, or
- (o) to an access licence with a share component that specifies the Euroka Creek Water Source,

- if it would cause the sum of the share components of all access licences in the Downstream Trading Zone to exceed the sum of the share components of all access licences in the Downstream Trading Zone at the commencement of this Plan plus 15, or
- (p) to an access licence with a share component that specifies the Five Day Creek Water Source, if it would cause the sum of the share components of all access licences in the Five Day Creek Water Source to exceed 100, or
  - (q) to an access licence with a share component that specifies the Hickeys Creek Water Source, if it would cause the sum of the share components of all access licences in the Hickeys Creek Water Source to exceed 87, or
  - (r) to an access licence with a share component that specifies the Malpas Dam Water Source, if it would cause the sum of the share components of all access licences in the Malpas Dam Water Source to exceed 144, or
  - (s) to an access licence with a share component that specifies the Mungay Creek Water Source, if it would cause the sum of the share components of all access licences in the Mungay Creek Water Source to exceed 103, or
  - (t) to an access licence with a share component that specifies the Nulla Nulla Creek Water Source, if it would cause the sum of the share components of all access licences in the Nulla Nulla Creek Water Source to exceed 230, or
  - (u) to an access licence with a share component that specifies the Oaky River Water Source, if it would cause the sum of the share components of all access licences in the Oaky River Water Source to exceed 221, or
  - (v) to an access licence with a share component that specifies the Salisbury Waters Water Source, if it would cause the sum of the share components of all access licences in the Salisbury Waters Water Source to exceed 1,476, or
  - (w) to an access licence with a share component that specifies the Tia River Water Source, if it would cause the sum of the share components of all access licences in the Tia River Water Source to exceed 703, or
  - (x) to an access licence with a share component that specifies the Warbro Brook Water Source, if it would cause the sum of the share components of all access licences in the Warbro Brook Water Source to exceed 304, or
  - (y) to an access licence with a share component that specifies the Yarrawitch River Water Source, if it would cause the sum of the share components of all access licences in the Yarrawitch River Water Source to exceed 759, or
  - (z) to an access licence with a share component that specifies the Apsley Gorge Water Source from an access licence with a share component that specified a water source, other than the following water sources:
    - (i) Aspley River Water Source,
    - (ii) Green Gully Water Source,

- (iii) Tia River Water Source,
- (iv) Yarrowitch River Water Source, or
- (aa) to an access licence with a share component that specifies the Chandler Gorge Water Source, from an access licence with a share component that specified a water source other than the following water sources:
  - (i) Chandler River Water Source,
  - (ii) Oaky Creek Water Source,
  - (iii) Styx River Water Source, or
- (ab) to an access licence with a share component that specifies the Gara River Water Source from an access licence with a share component that specified a water source other than the following water sources, if it would cause the sum of the share components of all access licences in the Gara River Water Source to exceed 1,412:
  - (i) Malpas Dam Water Source,
  - (ii) Commissioners Waters Water Source, or
- (ac) to an access licence with a share component that specifies the Macleay Gorges Water Source from an access licence with a share component that specified one of the following water sources, if it would cause the sum of the share components of all access licences in the Macleay Gorges Water Source to exceed 2:
  - (i) Christmas Creek Water Source,
  - (ii) Coastal Macleay Water Source,
  - (iii) Collombatti Creek Water Source,
  - (iv) Dungay Creek Water Source,
  - (v) Dyke River Water Source,
  - (vi) Euroka Creek Water Source,
  - (vii) Five Day Creek Water Source,
  - (viii) Georges River Water Source,
  - (ix) Gills Bridge Creek Water Source,
  - (x) Hickeys Creek Water Source,
  - (xi) Macleay Valley Water Source,
  - (xii) Mungay Creek Water Source,
  - (xiii) Nulla Nulla Creek Water Source,
  - (xiv) Toorumbree Creek Water Source,

- (xv) Stockyard Creek Water Source,
- (xvi) Warbro Brook Water Source, or
- (ad) to an access licence with a share component that specifies the Macleay Valley Water Source from an access licence with a share component that specified one of the following water sources, if it would cause the sum of the share components of all access licences in the Macleay Valley Water Source to exceed 3,481:
  - (i) Christmas Creek Water Source,
  - (ii) Coastal Macleay Water Source,
  - (iii) Collombatti Creek Water Source,
  - (iv) Dungay Creek Water Source,
  - (v) Euroka Creek Water Source,
  - (vi) Gills Bridge Creek Water Source.

**64 Amendment of share components dealings (change of water source)**

- (1) Dealings under section 71R of the Act are subject to the share component of the new access licence being equal to the share component of the cancelled access licence.
- (2) Dealings under section 71R of the Act are prohibited if the dealing involves any of the following:
  - (a) the cancellation of an access licence with a share component specifying a water source in one extraction management unit in order to grant an access licence with a share component specifying a water source in another extraction management unit,
  - (b) the granting of an access licence with a share component specifying a water source in one extraction management unit following the cancellation of an access licence with a share component specifying a water source in another extraction management unit,
  - (c) the granting of a new access licence with a share component that specifies one of the following water sources:
    - (i) the Dyke River Water Source,
    - (ii) the Georges River Water Source,
    - (iii) the Gills Bridge Creek Water Source,
    - (iv) the Green Gully Water Source,
    - (v) the Kunderang Brook Water Source,
    - (vi) the Stockyard Creek Water Source,
    - (vii) the Styx River Water Source,
    - (viii) the Toorumbie Creek Water Source,

- (ix) the Coastal Macleay Floodplain Alluvial Groundwater Source,
- (d) the granting of a new access licence with a share component that specifies the Apsley River Water Source, if it would cause the sum of the share components of all access licences in the Apsley River Water Source to exceed 326,
- (e) the granting of a new access licence with a share component that specifies the Bakers Creek Water Source, if it would cause the sum of the share components of all access licences in the Bakers Creek Water Source to exceed 195,
- (f) the granting of a new access licence with a share component that specifies the Blue Mountain Creek Water Source, if it would cause the sum of the share components of all access licences in the Blue Mountain Creek Water Source to exceed 253,
- (g) the granting of a new access licence with a share component that specifies the Chandler River Water Source, if it would cause the sum of the share components of all access licences in the Chandler River Water Source to exceed 301,
- (h) the granting of a new access licence with a share component that specifies the Christmas Creek Water Source, if it would cause the sum of the share components of all access licences in the Christmas Creek Water Source to exceed 40,
- (i) the granting of a new access licence with a share component that specifies the Coastal Macleay Water Source, if it would cause the sum of the share components of all access licences in the Non-Tidal Management Zone to exceed the sum of the share components of all access licences in the Non-Tidal Management Zone at the commencement of this Plan,
- (j) the granting of a new access licence with a share component that specifies the Coastal Macleay Water Source, if it would cause the sum of the share components of all access licences in the Tidal Management Zone to exceed the sum of the share components of all access licences in the Tidal Management Zone at the commencement of this Plan plus 500,
- (k) the granting of a new access licence with a share component that specifies the Collombatti Creek Water Source, if it would cause the sum of the share components of all access licences in the Collombatti Creek Water Source to exceed 67,
- (l) the granting of a new access licence with a share component that specifies the Commissioners Waters Water Source, if it would cause the sum of the share components of all access licences in the Commissioners Waters Water Source to exceed 2,166,
- (m) the granting of a new access licence that nominates a water supply work located in the Upstream Trading Zone in the Dungay Creek Water Source,
- (n) the granting of a new access licence with a share component that specifies the Dungay Creek Water Source, if it would cause the sum of the share components of all access licences in the Downstream Trading Zone to exceed the sum of the share components of all access licences in the Downstream Trading Zone at the commencement of this Plan,
- (o) the granting of a new access licence that nominates a water supply work located in the Upstream Trading Zone in the Euroka Creek Water Source,
- (p) the granting of a new access licence with a share component that specifies the Euroka Creek

Water Source, if it would cause the sum of the share components of all access licences in the Downstream Trading Zone to exceed the sum of the share components of all access licences in the Downstream Trading Zone at the commencement of this Plan plus 15,

- (q) the granting of a new access licence with a share component that specifies the Five Day Creek Water Source, if it would cause the sum of the share components of all access licences in the Five Day Creek Water Source to exceed 100,
- (r) the granting of a new access licence with a share component that specifies the Hickeys Creek Water Source, if it would cause the sum of the share components of all access licences in the Hickeys Creek Water Source to exceed 87,
- (s) the granting of a new access licence with a share component that specifies the Malpas Dam Water Source, if it would cause the sum of the share components of all access licences in the Malpas Dam Water Source to exceed 144,
- (t) the granting of a new access licence with a share component that specifies the Mungay Creek Water Source, if it would cause the sum of the share components of all access licences in the Mungay Creek Water Source to exceed 103,
- (u) the granting of a new access licence with a share component that specifies the Nulla Nulla Creek Water Source, if it would cause the sum of the share components of all access licences in the Nulla Nulla Creek Water Source to exceed 230,
- (v) the granting of a new access licence with a share component that specifies the Oaky River Water Source, if it would cause the sum of the share components of all access licences in the Oaky River Water Source to exceed 221,
- (w) the granting of a new access licence with a share component that specifies the Salisbury Waters Water Source, if it would cause the sum of the share components of all access licences in the Salisbury Waters Water Source to exceed 1,476,
- (x) the granting of a new access licence with a share component that specifies the Tia River Water Source, if it would cause the sum of the share components of all access licences in the Tia River Water Source to exceed 703,
- (y) the granting of a new access licence with a share component that specifies the Warbro Brook Water Source, if it would cause the sum of the share components of all access licences in the Warbro Brook Water Source to exceed 304,
- (z) the granting of a new access licence with a share component that specifies the Yarrawitch River Water Source, if it would cause the sum of the share components of all access licences in the Yarrawitch River Water Source to exceed 759,
- (aa) the granting of a new access licence with a share component that specifies the Apsley Gorge Water Source, if the share component of the cancelled access licence specified a water source other than the following water sources:
  - (i) Aspley River Water Source,
  - (ii) Green Gully Water Source,

- (iii) Tia River Water Source,
- (iv) Yarrowitch River Water Source,
- (ab) the granting of a new access licence with a share component that specifies the Chandler Gorge Water Source, if the share component of the cancelled access licence specified a water source other than the following water sources:
  - (i) the Chandler River Water Source,
  - (ii) the Oaky Creek Water Source,
  - (iii) the Styx River Water Source,
- (ac) the granting of a new access licence with a share component that specifies the Gara River Water Source, if the share component of the cancelled access licence specified a water source other than the following water sources and it would cause the sum of the share components of all access licences in the Gara River Water Source to exceed 1,412:
  - (i) Malpas Dam Water Source,
  - (ii) Commissioners Waters Water Source,
- (ad) the granting of a new access licence with a share component that specifies the Macleay Gorges Water Source, if the share component of the cancelled access licence specified one of the following water sources and it would cause the sum of the share components of all access licences in the Macleay Gorges Water Source to exceed 2:
  - (i) Christmas Creek Water Source,
  - (ii) Coastal Macleay Water Source,
  - (iii) Collombatti Creek Water Source,
  - (iv) Dungay Creek Water Source,
  - (v) Dyke River Water Source,
  - (vi) Euroka Creek Water Source,
  - (vii) Five Day Creek Water Source,
  - (viii) Georges River Water Source,
  - (ix) Gills Bridge Creek Water Source,
  - (x) Hickeys Creek Water Source,
  - (xi) Macleay Valley Water Source,
  - (xii) Mungay Creek Water Source,
  - (xiii) Nulla Nulla Creek Water Source,
  - (xiv) Toorumbree Creek Water Source,

- (xv) Stockyard Creek Water Source,
- (xvi) Warbro Brook Water Source, or
- (ae) the granting of a new access licence with a share component that specifies the Macleay Valley Water Source, if the share component of the cancelled access licence specified one of the following water sources and it would cause the sum of the share components of all access licences in the Macleay Valley Water Source to exceed 3,481:
  - (i) Christmas Creek Water Source,
  - (ii) Coastal Macleay Water Source,
  - (iii) Collombatti Creek Water Source,
  - (iv) Dungay Creek Water Source,
  - (v) Euroka Creek Water Source,
  - (vi) Gills Bridge Creek Water Source.
- (3) The extraction component of a new access licence granted in accordance with a section 71R dealing will not carry over the extraction component from the cancelled access licence.

#### **65 Amendment of extraction component dealings**

Dealings under section 71S of the Act are prohibited if the dealing involves:

- (a) an access licence with an extraction component that specifies the Tidal Management Zone in the Coastal Macleay Water Source being varied to specify the Non-Tidal Management Zone in the Coastal Macleay Water Source, if it would cause the sum of the share components of all access licences in the Non-Tidal Management Zone to exceed the sum of the share components of all access licences in the Non-Tidal Management Zone at the commencement of this Plan, or
- (b) an access licence with an extraction component that specifies the Non-Tidal Management Zone in the Coastal Macleay Water Source being varied to specify the Tidal Management Zone in the Coastal Macleay Water Source, if it would cause the sum of the share components of all access licences in the Tidal Management Zone to exceed the sum of the share components of all access licences in the Tidal Management Zone at the commencement of this Plan plus 500.

#### **66 Assignment of water allocations dealings**

- (1) Dealings under section 71T of the Act within the same water source are prohibited in these water sources if the dealing involves an assignment of water allocation from:
  - (a) an access licence with an extraction component that specifies the Tidal Management Zone in the Coastal Macleay Water Source to an access licence with an extraction component that specifies the Non-Tidal Management Zone in the Coastal Macleay Water Source, if it would cause the sum of the water allocations credited to the water allocation accounts of all access licences in the Non-Tidal Management Zone, from available water determinations or dealings under section 71T of the Act in that water year to exceed the sum of the share components of all access licences in the Non-Tidal Management Zone at the commencement of this Plan, or



- (b) an access licence with an extraction component that specifies the Non-Tidal Management Zone in the Coastal Macleay Water Source to an access licence with an extraction component that specifies the Tidal Management Zone in the Coastal Macleay Water Source, if it would cause the sum of the water allocations credited to the water allocation accounts of all access licences in the Tidal Management Zone, from available water determinations or dealings under section 71T of the Act in that water year to exceed the sum of the share components of all access licences in the Tidal Management Zone at the commencement of this Plan plus 500, or
  - (c) an access licence that does not nominate a water supply work located in the Upstream Trading Zone in the Dungay Creek Water Source to an access licence that nominates a water supply work located in the Upstream Trading Zone of the Dungay Creek Water Source, or
  - (d) an access licence that does not nominate a water supply work located in the Downstream Trading Zone in the Dungay Creek Water Source to an access licence that nominates a water supply work located in the Downstream Trading Zone in the Dungay Creek Water Source, if it would cause the sum of the share components of all access licences in the Downstream Trading Zone, from available water determinations or dealings under section 71T of the Act in that water year to exceed the sum of the share components of all access licences in the Downstream Trading Zone at the commencement of this Plan, or
  - (e) an access licence that does not nominate a water supply work located in the Upstream Trading Zone in the Euroka Creek Water Source to an access licence that nominates a water supply work located in the Upstream Trading Zone of the Euroka Creek Water Source, or
  - (f) an access licence that does not nominate a water supply located in the Downstream Trading Zone in the Euroka Creek Water Source to an access licence that nominates a water supply work located in the Downstream Trading Zone in the Euroka Creek Water Source, if it would cause the sum of the water allocations credited to the water allocation accounts of all access licences in the Downstream Trading Zone, from available water determinations or dealings under section 71T Act in that water year to exceed the sum of the share components of all access licences in the Downstream Trading Zone at the commencement of this Plan plus 15.
- (2) Dealings under section 71T of the Act between different water sources are prohibited in these water sources if the dealing involves an assignment of water allocation:
- (a) from an access licence in one extraction management unit to an access licence in another extraction management unit, or
  - (b) to an access licence in one of the following water sources:
    - (i) the Dyke River Water Source,
    - (ii) the Georges River Water Source,
    - (iii) the Gills Bridge Creek Water Source,
    - (iv) the Green Gully Water Source,
    - (v) the Kunderang Brook Water Source,

- (vi) the Stockyard Creek Water Source,
- (vii) the Styx River Water Source,
- (viii) the Toorumbree Creek Water Source,
- (ix) the Coastal Macleay Floodplain Alluvial Groundwater Source, or
- (c) to an access licence in the Apsley River Water Source, if it would cause the sum of water allocations credited to the water allocation accounts of all access licences in the Apsley River Water Source from available water determinations or dealings under section 71T of the Act in that water year, to exceed 326, or
- (d) to an access licence in the Bakers Creek Water Source, if it would cause the sum of water allocations credited to the water allocation accounts of all access licences in the Bakers Creek Water Source from available water determinations or dealings under section 71T of the Act in that water year, to exceed 195, or
- (e) to an access licence in the Blue Mountain Creek Water Source, if it would cause the sum of water allocations credited to the water allocation accounts of all access licences in the Blue Mountain Creek Water Source from available water determinations or dealings under section 71T of the Act in that water year, to exceed 253, or
- (f) to an access licence in the Chandler River Water Source, if it would cause the sum of water allocations credited to the water allocation accounts of all access licences in the Chandler River Water Source from available water determinations or dealings under section 71T of the Act in that water year, to exceed 301, or
- (g) to an access licence in the Christmas Creek Water Source, if it would cause the sum of water allocations credited to the water allocation accounts of all access licences in the Christmas Creek Water Source from available water determinations or dealings under section 71T of the Act in that water year, to exceed 40, or
- (h) to an access licence with an extraction component that specifies the Non-Tidal Management Zone in the Coastal Macleay Water Source, if it would cause the sum of water allocations credited to the water allocation accounts of all access licences in that management zone from available water determinations or dealings under section 71T of the Act in that water year, to exceed the sum of the share components of all access licences in that management zone at the commencement of this Plan, or
- (i) to an access licence with an extraction component that specifies the Tidal Management Zone in the Coastal Macleay Water Source, if it would cause the sum of water allocations credited to the water allocation accounts of all access licences in that management zone, from available water determinations or dealings under section 71T of the Act in that water year, to exceed the sum of the share components of all access licences in that management zone at the commencement of this Plan plus 500, or
- (j) to an access licence in the Collombatti Creek Water Source, if it would cause the sum of water allocations credited to the water allocation accounts of all access licences in the Collombatti Creek Water Source from available water determinations or dealings under section 71T of the Act in that water year, to exceed 67, or

- (k) to an access licence in the Commissioners Waters Water Source, if it would cause the sum of water allocations credited to the water allocation accounts of all access licences in the Commissioners Waters Water Source from available water determinations or dealings under section 71T of the Act in that water year, to exceed 2,166, or
- (l) to an access licence that nominates a water supply work in the Upstream Trading Zone in the Dungay Creek Water Source, or
- (m) to an access licence that nominates a water supply work in the Downstream Trading Zone in the Dungay Creek Water Source, if it would cause the sum of water allocations credited to the water allocation accounts of all access licences in the Downstream Trading Zone, from available water determinations or dealings under section 71T of the Act in that water year, to exceed the sum of the share components of all access licences in the Downstream Trading Zone at the commencement of this Plan, or
- (n) to an access licence that nominates a water supply work in the Upstream Trading Zone in the Euroka Creek Water Source, or
- (o) to an access licence that nominates a water supply work in the Downstream Trading Zone in the Euroka Creek Water Source, if it would cause the sum of water allocations credited to the water allocation accounts of all access licences in the Downstream Trading Zone in the Euroka Creek Water Source, from available water determinations or dealings under section 71T of the Act in that water year, to exceed the sum of the share components of all access licences in the Downstream Trading Zone at the commencement of this Plan plus 15, or
- (p) to an access licence in the Five Day Creek Water Source, if it would cause the sum of water allocations credited to the water allocation accounts of all access licences in the Five Day Creek Water Source from available water determinations or dealings under section 71T of the Act in that water year, to exceed 100, or
- (q) to an access licence in the Hickeys Creek Water Source, if it would cause the sum of water allocations credited to the water allocation accounts of all access licences in the Hickeys Creek Water Source from available water determinations or dealings under section 71T of the Act in that water year, to exceed 87, or
- (r) to an access licence in the Malpas Dam Water Source, if it would cause the sum of water allocations credited to the water allocation accounts of all access licences in the Malpas Dam Water Source from available water determinations or dealings under section 71T of the Act in that water year, to exceed 144, or
- (s) to an access licence in the Mungay Creek Water Source, if it would cause the sum of water allocations credited to the water allocation accounts of all access licences in the Mungay Creek Water Source from available water determinations or dealings under section 71T of the Act in that, water year to exceed 103, or
- (t) to an access licence in the Nulla Nulla Creek Water Source, if it would cause the sum of water allocations credited to the water allocation accounts of all access licences in the Nulla Nulla Creek Water Source from available water determinations or dealings under section 71T of the Act in that water year, to exceed 230, or
- (u) to an access licence in the Oaky River Water Source if it would cause the sum of water

allocations credited to the water allocation accounts of all access licences in the Oaky River Water Source from available water determinations or dealings under section 71T of the Act in that water year, to exceed 221, or

- (v) to an access licence in the Salisbury Waters Water Source, if it would cause the sum of water allocations credited to the water allocation accounts of all access licences in the Salisbury Waters Water Source from available water determinations or dealings under section 71T of the Act in that water year, to exceed 1,476, or
- (w) to an access licence in the Tia River Water Source, if it would cause the sum of water allocations credited to the water allocation accounts of all access licences in the Tia River Water Source from available water determinations or dealings under section 71T of the Act in that water year, to exceed 703, or
- (x) to an access licence in the Warbro Brook Water Source, if it would cause the sum of water allocations credited to the water allocation accounts of all access licences in the Warbro Brook Water Source from available water determinations or dealings under section 71T of the Act in that water year, to exceed 304, or
- (y) to an access licence in the Yarrowitch River Water Source, if it would cause the sum of water allocations credited to the water allocation accounts of all access licences in the Yarrowitch River Water Source from available water determinations or dealings under section 71T of the Act in that water year, to exceed 759, or
- (z) to an access licence in the Apsley Gorge Water Source from a water source other than the following water sources:
  - (i) the Apsley River Water Source,
  - (ii) the Green Gully Water Source,
  - (iii) the Tia River Water Source,
  - (iv) the Yarrowitch River Water Source, or
- (aa) to an access licence in the Chandler Gorge Water Source from a water source other than the following water sources:
  - (i) the Chandler River Water Source,
  - (ii) the Oaky Creek Water Source,
  - (iii) the Styx River Water Source, or
- (ab) to an access licence in the Gara River Water Source, if the dealing involves an assignment of water allocation from a water source other than the following water sources and it would cause the sum of water allocations credited to the water allocation accounts of all access licences in the Gara River Water Source from available water determinations or dealings under section 71T of the Act in that water year, to exceed 1,412:
  - (i) Malpas Dam Water Source,
  - (ii) Commissioners Waters Water Source, or

- (ac) to an access licence in the Macleay Gorges Water Source if dealing involves an assignment of water allocation from one of the following water sources and it would cause the sum of water allocations credited to the water allocation accounts of all access licences in the Macleay Gorges Water Source from available water determinations or dealings under section 71T of the Act in that water year, to exceed 2:
- (i) Christmas Creek Water Source,
  - (ii) Coastal Macleay Water Source,
  - (iii) Collombatti Creek Water Source,
  - (iv) Dungay Creek Water Source,
  - (v) Dyke River Water Source,
  - (vi) Euroka Creek Water Source,
  - (vii) Five Day Creek Water Source,
  - (viii) Georges River Water Source,
  - (ix) Gills Bridge Creek Water Source,
  - (x) Hickeys Creek Water Source,
  - (xi) Macleay Valley Water Source,
  - (xii) Mungay Creek Water Source,
  - (xiii) Nulla Nulla Creek Water Source,
  - (xiv) Toorumbree Creek Water Source,
  - (xv) Stockyard Creek Water Source,
  - (xvi) Warbro Brook Water Source, or
- (ad) to an access licence in the Macleay Valley Water Source if dealing involves an assignment of water allocation from one of the following water sources and it would cause the sum of water allocations credited to the water allocation accounts of all access licences in the Macleay Valley Water Source from available water determinations or dealings under section 71T of the Act in that water year, to exceed 3,481:
- (i) Christmas Creek Water Source,
  - (ii) Coastal Macleay Water Source,
  - (iii) Collombatti Creek Water Source,
  - (iv) Dungay Creek Water Source,
  - (v) Euroka Creek Water Source,
  - (vi) Gills Bridge Creek Water Source.

**67 Interstate access licence transfer and assignment of water allocation**

- (1) Dealings under section 71U of the Act involving the interstate transfer of access licences to or from these water sources are prohibited.
- (2) Dealings under section 71V of the Act involving the interstate assignment of water allocations to or from access licences in these water sources are prohibited.

**68 Nomination of water supply works dealings**

- (1) Dealings under section 71W of the Act are prohibited if the dealing involves:
  - (a) an access licence being amended to nominate a water supply work located in a different management zone to that specified in the extraction component of the access licence, or
  - (b) an access licence being amended to nominate a water supply work located in a different water source to that specified in the share component of the access licence, or
  - (c) an access licence that does not nominate a water supply work located in the Non-Tidal Management Zone in the Coastal Macleay Water Source being amended to nominate a water supply work located in the Non-Tidal Management Zone in the Coastal Macleay Water Source, if it would cause the sum of the share components of all access licences in the Non-Tidal Management Zone to exceed the sum of the share components of all access licences in the Non-Tidal Management Zone at the commencement of this Plan, or
  - (d) an access licence that does not nominate a water supply work located in the Tidal Management Zone in the Coastal Macleay Water Source being amended to nominate a water supply work located in the Tidal Management Zone in the Coastal Macleay Water Source, if it would cause the sum of the share components of all access licences in the Tidal Management Zone to exceed the sum of the share components of all access licences in the Tidal Management Zone at the commencement of this Plan plus 500, or
  - (e) an access licence that does not nominate a water supply work located in the Upstream Trading Zone in the Dungay Creek Water Source being amended to nominate a water supply work located in the Upstream Trading Zone in the Dungay Creek Water Source, or
  - (f) an access licence that does not nominate a water supply work located in the Downstream Trading Zone in the Dungay Creek Water Source being amended to nominate a water supply work located in the Downstream Trading Zone in the Dungay Creek Water Source, if it would cause the sum of the share components of all access licences in the Downstream Trading Zone to exceed the sum of the share components of all access licences in the Downstream Trading Zone at the commencement of this Plan, or
  - (g) an access licence that does not nominate a water supply work located in the Upstream Trading Zone in the Euroka Creek Water Source being amended to nominate a water supply work located in the Upstream Trading Zone in the Euroka Creek Water Source, or
  - (h) an access licence that does not nominate a water supply work located in the Downstream Trading Zone in the Euroka Creek Water Source being amended to nominate a water supply work located in the Downstream Trading Zone in the Euroka Creek Water Source, if it would cause the sum of the share components of all access licences in the Downstream Trading Zone to exceed the sum of the share components of all access licences in the

Downstream Trading Zone at the commencement of this Plan plus 15.

- (2) Dealings under section 71W of the Act that involve the nomination of water supply work located in a State other than New South Wales, by an access licence in these water sources are prohibited.
- (3) Dealings under section 71W of the Act that involve the nomination of a water supply work in these water sources, by an access licence from a State other than New South Wales, are prohibited.

## Part 12 Mandatory conditions

**Note.** Part 13 allows for amendments to be made to this Part.

### Division 1 General

#### 69 General

In this Part:

- (a) a requirement to notify the Minister in writing will only be satisfied by writing to the address listed in Appendix 4 of this Plan or to the email address for the Department's Advisory Service, Water Regulation, and

**Note.** At the commencement of this Plan, the email address for the Department's Advisory Service, Water Regulation is [water.enquiries@dpi.nsw.gov.au](mailto:water.enquiries@dpi.nsw.gov.au).

- (b) a metered water supply work with a data logger means a water supply work with:
  - (i) a meter that complies with Australian Standard AS 4747, *Meters for non-urban water supply*, as may be updated or replaced from time to time, and
  - (ii) a data logger, and
- (c) if the holder of a water supply work approval is the same as the holder of the access licence under which water is proposed to be taken, it is not necessary to maintain two separate Logbooks and all the required information can be kept in one Logbook.

**Note.** *Logbook* is defined in the Dictionary.

### Division 2 Access licences

**Note.** This Division is made in accordance with sections 17 (c), 20 and 66 of the Act.

#### 70 General

- (1) Access licences in these water sources must have mandatory conditions where required to give effect to the following:
  - (a) the relevant water allocation account management rules specified in Division 1 of Part 9 of this Plan,
  - (b) the relevant access rules for the taking of water specified in Division 2 of Part 9 of this Plan,
  - (c) the holder of the access licence upon becoming aware of a breach of any condition of the

access licence must:

- (i) notify the Minister as soon as practicable, and
  - (ii) if the notification under subparagraph (i) was not in writing, confirm this notification in writing within 7 days of becoming aware of the breach,
  - (d) any other condition required to implement the provisions of this Plan.
- (2) Access licences in these water sources, excluding access licences that nominate only metered water supply works with a data logger, must have mandatory conditions where required to give effect to the following:
- (a) the holder of the access licence must keep a Logbook,
  - (b) the holder of the access licence must record the following in the Logbook:
    - (i) each date and start and end time during which water was taken under the access licence,
    - (ii) the volume of water taken on that date,
    - (iii) the water supply work approval number of the water supply work used to take the water on that date,
    - (iv) the purpose or purposes for which the water was taken on that date,
    - (v) for access licences with share components that specify one of these connected water sources, excluding the Apsley River Water Source, the Commissioners Waters Water Source and the Toorumbbee Creek Water Source, the volume of water taken in the first three water years of this Plan by comparison to the volume of water permitted to be taken in those years under clause 42 (2),
    - (vi) for access licences with share components that specify one of these connected water sources, excluding the Apsley River Water Source, the Commissioners Waters Water Source and the Toorumbbee Creek Water Source, the volume of water taken in any three consecutive water years after the first water year of this Plan by comparison to the volume of water permitted to be taken in those years under clause 42 (3),
    - (vii) for domestic and stock access licences, local water utility access licences and unregulated river access licences with share components that specify the Apsley River Water Source, the Commissioners Waters Water Source and the Toorumbbee Creek Water Source, the volume of water taken in any three consecutive water years by comparison to the volume of water permitted to be taken in those years under clause 43 (2),
    - (viii) for aquifer access licences with share components that specify the Apsley River Water Source, the Commissioners Waters Water Source and the Toorumbbee Creek Water Source, the volume of water taken in the first three water years of this Plan by comparison to the volume of water permitted to be taken in those years under clause 43 (3),
    - (ix) for aquifer access licences with share components that specify the Apsley River Water Source, the Commissioners Waters Water Source and the Toorumbbee Creek Water



Source, the volume of water taken in any three consecutive water years after the first water year of this Plan by comparison to the volume of water permitted to be taken in those years under clause 43 (4),

- (x) for access licences with a share component that specifies the Coastal Macleay Floodplain Alluvial Groundwater Source, the volume of water taken in a water year by comparison to the volume of water permitted to be taken in that water year under clause 44 (2),
  - (xi) any other information required to be recorded in the Logbook under the rules of this Plan,
  - (c) the holder of the access licence must produce the Logbook to the Minister for inspection, when requested,
  - (d) the holder of the access licence must retain the information required to be recorded in the Logbook for five years from the date to which that information relates.
- (3) The Minister may require the holder of the access licence that nominates only a metered water supply work with a data logger to keep a Logbook in accordance with any requirements of subclause (2).
- (4) An access licence for an approved EP&A Act development must have mandatory conditions where required to give effect to the rules for the use of water supply works located within the restricted distances specified in clause 60.

### Division 3 Water supply work approvals

**Note.** This Division is made in accordance with sections 17 (c) and 100 of the Act.

#### 71 General

- (1) Water supply work approvals for water supply works in these water sources must have mandatory conditions where required to give effect to the following:
- (a) when directed by the Minister by notice in writing, the approval holder must have metering equipment installed that meets the following requirements:
    - (i) the metering equipment must accurately measure and record the flow of all water taken through the water supply work,
    - (ii) the metering equipment must comply with Australian Standard AS 4747, *Meters for non-urban water supply*, as may be updated or replaced from time to time,
    - (iii) the metering equipment must be operated and maintained in a proper and efficient manner at all times,
    - (iv) the metering equipment must be sited and installed at a place in the pipe, channel or conduit between the water source and the first discharge outlet. There must be no flow of water out of the pipe, channel or conduit between the water source and the metering equipment,
    - (v) any other requirements as to type, standard or other criteria for the metering equipment

specified in the notice,

**Note.** The Minister may also direct a landholder or person to install, replace or properly maintain metering equipment under section 326 of the Act.

- (b) if a water supply work is to no longer be used permanently, then the approval holder of that work must provide the Minister with notice in writing that the approval holder intends to decommission the water supply work, at least 90 days prior to the date of commencement of decommissioning,
  - (c) upon receiving notice of the intention to decommission from the approval holder under paragraph (b), the Minister may by notice in writing, require that the water supply work not be decommissioned, or that the water supply work be decommissioned in accordance with other requirements. These requirements may be specified by the Minister in a work plan,

**Note.** If a notice in writing is required from the Minister regarding the decommissioning of a water supply work, this notice will be sent to the approval holder within 60 days of the notice under paragraph (b) being sent.
  - (d) if the approval holder receives a notice from the Minister under paragraph (c), the approval holder must proceed in accordance with any requirements in that notice,
  - (e) if the approval holder does not receive a notice from the Minister under paragraph (c) within 60 days of providing notice of the intent to decommission under paragraph (b), the approval holder must decommission the water supply work,
  - (f) within 60 days of the water supply work being decommissioned under paragraphs (d) or (e), the approval holder must notify the Minister in writing that the water supply work has been decommissioned,
  - (g) the holder of the water supply work approval upon becoming aware of a breach of any condition of the approval must:
    - (i) notify the Minister as soon as practicable, and
    - (ii) if the notification under subparagraph (i) was not in writing, confirm this notification in writing within seven days of becoming aware of the breach,
  - (h) any other conditions required to implement the provisions of this Plan.
- (2) Water supply work approvals for water supply works in these water sources, excluding a water supply work that is a metered water supply work with a data logger or is used for the purpose of taking water under basic landholder rights only, must have mandatory conditions where required to give effect to the following:
- (a) the holder of a water supply work approval must keep a Logbook,
  - (b) the holder of a water supply work approval must record the following in the Logbook:
    - (i) each date and start and end time during which water was taken using the water supply work,
    - (ii) the volume of water taken on that date,

- (iii) the number of the access licence under which water was taken on that date or, if water was taken under some other authority (such as basic landholder rights), the authority under which water was taken,
  - (iv) the purpose or purposes for which the water was taken on that date,
  - (v) details of any cropping carried out using the water taken through the water supply work including the type of crop, area cropped and dates of planting and harvesting,
  - (vi) where metering equipment has been installed for use in connection with the water supply work, the meter reading before water is taken,
  - (vii) where metering equipment has not been installed for use in connection with the water supply work, details of all pumping activities for the water supply work including pump running hours, pump power usage or pump fuel usage, pump start and stop times and pump capacity per unit of time,
  - (viii) any other information required to be recorded in the Logbook under the rules of this Plan,
- (c) the holder of the water supply work approval must produce the Logbook to the Minister for inspection when requested,
- (d) the holder of a water supply work approval must retain the information required to be recorded in the Logbook for five years from the date to which that information relates.
- (3) Water supply work approvals held by Armidale Dumaresq Shire Council that take water from the Malpas Dam Water Source must have mandatory conditions to give effect to the system operation rules in Part 6 of this Plan.
- (4) The Minister may require the holder of a water supply work approval for a metered water supply work with a data logger to keep a Logbook in accordance with any requirements of subclause (2).
- (5) All water supply work approvals must contain mandatory conditions to require that the water supply work must not be used to take water unless, before water is taken, the holder of the water supply work approval confirms that the relevant cease to take conditions do not apply. Where the holder is required to keep a Logbook, the holder must record that confirmation and the means of confirmation (such as visual inspection or internet search), in the Logbook.
- (6) Water supply work approvals for runoff harvesting dams and in-river dams must have a mandatory condition where required to give effect to clause 52 (2).

## **72 Water supply works authorised to take water from groundwater**

- (1) This clause applies to all water supply work approvals for water supply works that are authorised to take water from:
  - (a) these upriver alluvial sediments, and
  - (b) the Coastal Macleay Floodplain Alluvial Groundwater Source.
- (2) Water supply work approvals to which this clause applies must have mandatory conditions where

required to give effect to the following:

- (a) the rules for limiting the taking of water within the restricted distances specified in clause 60,
- (b) the approval holder must ensure the water supply work is constructed so as to be:
  - (i) screened in the water source specified in the share component of the access licence that nominates the work, and
  - (ii) sealed off from all other water sources,
- (c) the construction of a new water supply work must:
  - (i) comply with the restricted distances specified in or specified by the Minister in accordance with clauses 54–58, and
  - (ii) comply with the construction standards for that type of bore prescribed in the Minimum Construction Requirements for Water Bores in Australia, 2012, and

**Note.** *Minimum Construction Requirements for Water Bores in Australia* is defined in the Dictionary.

  - (iii) be constructed to prevent contamination between aquifers, and
  - (iv) be constructed to prevent the flow of saline water between aquifers as directed by the Minister in writing,
- (d) if a water supply work is to no longer be used permanently, then the approval holder of that work must provide the Minister with notice in writing that the approval holder intends to decommission the water supply work, at least 90 days prior to the date of commencement of decommissioning and include a work plan for decommissioning in accordance with the Minimum Construction Requirements for Water Bores in Australia,
- (e) upon receiving notice of the intention to decommission from the approval holder under paragraph (d), the Minister may by notice in writing, require that the water supply work not be decommissioned, or that the water supply work be decommissioned in accordance with other requirements,

**Note.** If a notice in writing is required from the Minister regarding the decommissioning of a water supply work, this notice will be sent to the approval holder within 60 days of the notice under paragraph (d) being sent.
- (f) if the approval holder receives a notice from the Minister under paragraph (e), the approval holder must proceed in accordance with any requirements in that notice,
- (g) if the approval holder does not receive a notice from the Minister under paragraph (e) within 60 days of providing notice of the intent to decommission under paragraph (d), the approval holder must decommission the water supply work in accordance with the work plan,
- (h) within 60 days of the water supply work being decommissioned under paragraphs (f) or (g), the approval holder must notify the Minister in writing that the water supply work has been decommissioned and provide the name of the driller who decommissioned the work,
- (i) the approval holder must, within 60 days of completion of the construction of the water

- supply work, or within 60 days after the issue of the water supply work approval if the approval is for the amendment of an existing water supply work, submit the details of the water supply work to the Department in a form approved by the Minister,
- (j) if, during the construction of the water supply work, contaminated water is encountered above the production aquifer, the approval holder must:
    - (i) notify the Minister within 48 hours of becoming aware of the contaminated water, and
    - (ii) take all reasonable steps to minimise contamination and environmental harm, and
    - (iii) ensure that such water is sealed off by inserting casing to a depth sufficient to exclude the contaminated water from the water supply work and, if specified by the Minister, place an impermeable seal between the casing and the walls of the water supply work from the bottom of the casing to ground level as specified by the Minister, and
    - (iv) if the Minister has specified any other requirements, comply with any requirements specified by the Minister in writing,
  - (k) when directed by the Minister by notice in writing, the approval holder must provide a report in the form specified in the notice detailing the quality of any water obtained using the water supply work,
  - (l) the authority to construct a water supply work under a water supply work approval will expire if the construction of that water supply work is not completed within three years of the issue of the water supply work approval,
  - (m) any other conditions required to implement the provisions of this Plan.
- (3) A water supply work approval granted in circumstances where clause 54 (2) (d) applies must have a mandatory condition where required to give effect to clause 54 (4).
  - (4) A water supply work approval for a water supply work must have mandatory conditions where required to give effect to the requirements for a replacement groundwater work specified in or specified by the Minister in accordance with clause 59.

## Part 13 Amendment of this Plan

### 73 General

- (1) Amendments specified throughout this Plan and in this Part are amendments authorised by this Plan.
- (2) An amendment authorised by this Plan is taken to include any consequential amendments required to be made to this Plan to give effect to that particular amendment.

**Note.** For example, if Part 1 is amended to add a new management zone, this may require amendments to other parts of this Plan to include rules for that management zone.
- (3) An amendment authorised by this Plan which results in a variation of the bulk access regime is an amendment authorised by this Plan for the purposes of sections 87 (2) (c) and 87AA of the Act.

#### **74 Part 1**

Part 1 may be amended to do any of the following:

- (a) apply this Plan to new or additional water sources or water management areas (including part thereof) or modify (including to amend the boundaries) or remove an existing water source or water management area (including part thereof) from this Plan,
- (b) add, remove or modify a management zone, including the water sources to which a management zone applies and the boundaries of such a zone,
- (c) add, remove or modify an extraction management unit, including the water sources to which an extraction management unit applies,
- (d) amend [the Plan Map](#).

#### **75 Part 4**

- (1) Subject to subclause (2), Part 4 may be amended to vary the amount of recharge reserved as planned environmental water in the Coastal Macleay Floodplain Alluvial Groundwater Source as a result of:
  - (a) recharge studies undertaken or assessed as adequate by the Minister, and
  - (b) increases made to the long-term average annual extraction limit in the Coastal Macleay Floodplain Alluvial Groundwater Source.
- (2) Part 4 may be amended to decrease the amount of recharge reserved as planned environmental water to no less than 75% of rainfall recharge in areas that are not high environmental value areas in the Coastal Macleay Floodplain Alluvial Groundwater Source.

#### **76 Part 6**

- (1) Part 6 may be amended to do any of the following:
  - (a) vary the volume of water to be released from Malpas Dam within the Malpas Dam Water Source after Year 2 of this Plan,
  - (b) change the gauge used to measure releases from Malpas Dam.

**Note.** Year 2 is defined in the Dictionary.

- (2) Before making an amendment pursuant to subclause (1) (a), the Minister should:
  - (a) take into account the socio-economic impacts of the proposed change, and
  - (b) take into account the environmental water requirements of this water source, and
  - (c) consult with relevant Government agencies and stakeholders.

#### **77 Part 7**

- (1) Subject to subclauses (2) and (3), the long-term average annual extraction limit for the Coastal Macleay Floodplain Alluvial Groundwater Source may be increased up to 8,157 ML/year.

**Note.** The maximum allowable increase in the long-term average annual extraction limit would result in a minimum of 75% of rainfall recharge being protected as planned environmental water over the long-term.

- (2) Subject to subclause (3), Part 7 of this Plan may be amended to modify the long-term average annual extraction limit of the Coastal Macleay Floodplain Alluvial Groundwater Source as a result of:
  - (a) recharge studies undertaken or assessed as adequate by the Minister, and
  - (b) socio-economic information assessed as adequate by the Minister.
- (3) Any amendment to the long-term average annual extraction limit under subclause (2) should maintain the protection of these groundwater sources and their dependent ecosystems, and should ensure consistency with the objectives outlined in this Plan.
- (4) Following the surrender under section 77 of the Act of an access licence and then the cancellation under section 77A (6) of the Act of an access licence in one of these water sources, the Minister may amend clause 30 to vary the long-term average annual extraction limit that applies to the EMU or that water source.

## **78 Part 9**

Division 2 of Part 9 of this Plan may be amended to do any of the following:

- (a) establish new or additional flow classes in these water sources, excluding the Apsley River Water Source, Commissioners Waters Water Source and the Toorumbree Creek Water Source, taking into account the following:
  - (i) any new information, assessed as adequate by the Minister, about the level of hydrological stress in these water sources,
  - (ii) the socio-economic impacts of the proposed change, and
  - (iii) the environmental water requirements of these water sources,provided that the Minister will consult with relevant Government agencies and stakeholders before making an amendment pursuant to this paragraph,
- (b) establish new or additional flow classes in these water sources, excluding the Apsley River Water Source, Commissioners Waters Water Source and the Toorumbree Creek Water Source, where management zones are added or in any water source or management zone that is amended during the term of this Plan as specified in clause 73,
- (c) amend clause 47 to extend the exemption to the cease to take conditions for stock watering purposes specified in clause 47 (22) (d) beyond Year 4 of this Plan and/or modify the volume of water permitted to be taken for stock watering purposes after Year 4 of this Plan,
- (d) establish new or additional flow classes in any water source where management zones are added or in any water source or management zone that is amended during the term of this Plan as specified in clause 74, provided that the Minister is satisfied that the amendments will not have significant adverse impact on the access to water of licence holders in the affected water source or management zone,
- (e) establish or assign TDELs in these water sources or management zones following the imposition

- of an adaptive environmental water condition on an access licence that requires the water to be left in the water source or management zone for environmental purposes,
- (f) establish or assign TDELs in these water sources or management zones to protect a proportion of flow within each flow class for the environment,
  - (g) amend or remove TDELs if TDELs have been established or assigned,
  - (h) include rules for the establishment, assignment and removal of IDELs,
  - (i) remove the existing access rules where TDELs and/or IDELs have been established under paragraph (e) or (g) to protect a proportion of flow within each flow class for the environment,
  - (j) reinstate access rules that applied at the commencement of this Plan, where TDELs and IDELs have been removed under paragraph (g),
  - (k) establish a salinity based access rule for access licences that take water from the surface water within the Tidal Management Zone of the Coastal Macleay Water Source. Before making an amendment pursuant to this subclause, the Minister should:
    - (i) take into account the socio-economic impacts of the proposed change, and
    - (ii) take into account the environmental water requirements of this water source, and
    - (iii) consult with relevant Government agencies and stakeholders,
  - (l) amend access licence rules for the taking of water by local water utility access licences in the Macleay Valley Water Source following a secure yield analysis assessed as adequate by the Department,
  - (m) amend existing flow classes, establish new or additional flow classes or amend the flow reference point in order to establish TDELs or IDELs,
  - (n) if in the Minister's opinion the access rule for the Yarrawitch River Water Source does not equate to an approximate flow of 3 ML/day at the Yarrobindi Bridge, amend the access rule for the Yarrawitch River Water Source to achieve the intended outcome.

## 79 Part 10

Part 10 may be amended to do any of the following:

- (a) amend clause 52 to specify water sources or management zones where water supply work approvals must not be granted or amended to authorise in-river dams on third or higher order streams,
- (b) add, remove or modify a restricted distance specified in:
  - (i) clause 54 after Year 5 of this Plan, or

**Note.** *Year 5 of this Plan* is defined in the Dictionary.
  - (ii) clause 56 based on the outcomes of further studies of groundwater-dependent ecosystems that are to the Minister's satisfaction,



- (c) amend the definition of a replacement groundwater work in clause 59,
- (d) amend clause 60 to impose further restrictions on the rate and timing of extraction of water to mitigate impacts,
- (e) amend [the Plan map](#) to add or remove a groundwater-dependent ecosystem.

## 80 Part 12

Part 12 may be amended to do any of the following:

- (a) amend the rules in relation to record keeping including in relation to requirements for Logbooks,
- (b) amend clause 71 or 72 to specify different standards or requirements for decommissioning water supply works or construction requirements for water supply works.

## 81 Dictionary

The Dictionary may be amended to add, modify or remove a definition.

## 82 Schedules

- (1) Schedule 1 may be amended to add or remove an access licence or [Water Act 1912](#) entitlement specified in Column 1 of the table to the Schedule and the corresponding water source and access rule in Columns 2 and 3.
- (2) Schedule 2 may be amended to do any of the following:
  - (a) remove an access licence or [Water Act 1912](#) entitlement specified in Column 1 of the table to the Schedule and the corresponding water source and access rule in Columns 2 and 3,
  - (b) amend the access rule specified in Column 3 of the table to the Schedule, or
  - (c) add an access licence to Column 1 of the table to the Schedule and specify the water source and access rule in Columns 2 and 3, based on the following requirements:
    - (i) the holder of an access licence has applied in writing to the Department within 12 months from the commencement of this Plan to have their access licence listed in the Schedule,
    - (ii) the applicant has held a [Water Act 1912](#) entitlement that has been converted to an access licence on commencement of this Plan,
    - (iii) the share component of the access licence taking water from the in-river dam pool specifies the Gara River Water Source,
    - (iv) the applicant must demonstrate a history of extraction regarding the taking of water from an in-river dam pool and provide any other information as required by the Minister,
    - (v) water must not be taken from an in-river dam pool when the in-river dam pool level is at or less than a volume determined by the Minister to be equivalent to the historical access practices under the [Water Act 1912](#) entitlement.

(3) Schedule 3 may be amended to do any of the following:

- (a) add a new access licence to clause 1 of Schedule 3, provided that a written request has been made to the Minister and the Minister is satisfied that extraction under the access licence is for a purpose listed in clause 47 (22) (a) and that the purpose was specified on, or referred to in the conditions of, the *Water Act 1912* entitlement that was replaced by the access licence,
- (b) add a local water utility access licence or an access licence of the subcategory “Town water supply” to clause 2 of Schedule 3, provided the Minister is satisfied that the water supply system used to take, store and deliver water has not undergone major augmentation since the commencement of this Plan,
- (c) add an access licence or a *Water Act 1912* entitlement to clause 3 of Schedule 3,
- (d) remove an access licence or a *Water Act 1912* entitlement from clause 1 of Schedule 3 if:
  - (i) an access licence dealing results in water being taken under the licence from a different location, or
  - (ii) an alternative water supply is obtained, or
  - (iii) the access licence is surrendered or cancelled,
- (e) remove a local water utility access licence, an access licence of the subcategory “Town water supply” or a *Water Act 1912* entitlement from clause 2 of Schedule 3 if:
  - (i) the Minister is satisfied that the water supply system used to take, store and deliver water has undergone major augmentation since the commencement of this Plan, or
  - (ii) the access licence is surrendered or cancelled or the purpose ceases to exist,
- (f) remove an access licence or a *Water Act 1912* entitlement from clause 3 of Schedule 3 if,
  - (i) an access licence dealing results in water being taken under the licence from a different location, or
  - (ii) an alternative water supply is obtained, or
  - (iii) the access licence is surrendered or cancelled.

(4) Schedule 4 may be amended to add or remove a contamination source.

### 83 Other

(1) This Plan may be amended to include rules for the following:

- (a) managed aquifer recharge,

**Note.** Managed aquifer recharge schemes involve taking water such as recycled water or urban stormwater, treating it and then storing it in underground aquifers under controlled conditions. This water can then be extracted at a later time.

- (b) the management of floodplain harvesting within these water sources,

- (c) the shepherding of water,

**Note.** *Shepherding* is defined in the Dictionary.

- (d) any new category of access licence established for the purpose of urban stormwater harvesting,
  - (e) the interception of water before it reaches a stream or aquifer by plantations or other means,
  - (f) the management of salt interception schemes,
  - (g) the management of aquifer interference activities, including the granting of aquifer interference approvals.
- (2) Consequential amendments may be made to this Plan as a result of an amendment to the Act or regulations.
  - (3) This Plan may be amended following the granting of a native title claim pursuant to the provisions of the *Native Title Act 1993* of the Commonwealth to give effect to an entitlement granted under that claim.
  - (4) This Plan may be amended to enable this Plan, or any part of this Plan, to be accredited as part or all of a water resource plan under the *Water Act 2007* of the Commonwealth.
  - (5) This Plan may be amended after Year 5 to provide rules for the protection of water-dependent Aboriginal cultural assets to do any of the following:
    - (a) identify water-dependent Aboriginal cultural assets,
    - (b) amend the access rules to protect water-dependent Aboriginal cultural assets,
    - (c) restrict the granting and amending of water supply work approvals to protect water-dependent Aboriginal cultural assets,
    - (d) amend the dealing rules to protect water-dependent Aboriginal cultural assets.
  - (6) Any amendment under subclause (5) will take into account the socio-economic impacts of the proposed change and the environmental water requirements of the water source.
  - (7) Before making an amendment pursuant to subclause (5) the Minister should consult with relevant Government agencies and stakeholders.
  - (8) This Plan may be amended to incorporate any water source and any associated rules into this Plan.

## Dictionary

**Note.** Unless otherwise defined in this Plan, words and expressions that are defined in the Act or in the regulations have the same meaning in this Plan.

*Aboriginal person* has the same meaning as it has in the *Aboriginal Land Rights Act 1983*.

*acid sulfate soils* means naturally occurring sediments and soils containing iron sulphides (principally pyrite) or their precursors or oxidation products, whose exposure to oxygen (for example by drainage or excavation) leads to the generation of sulphuric acid.

**alluvial sediments** means unconsolidated fluvio-lacustrine sediments.

**approved EP&A Act development** means:

- (a) a project approved under Part 3A of the *Environmental Planning and Assessment Act 1979* (whether before or after its repeal), or
- (b) State significant development authorised by a development consent under Part 4 of that Act, or
- (c) State significant infrastructure approved under Part 5.1 of that Act.

**cease to take condition** means any term or condition on a water supply work approval, an access licence or *Water Act 1912* entitlement that prohibits the taking of water in a particular circumstance.

**drawdown** means a lowering of the level to which water will rise in cased bores.

**Note.** Natural drawdown may occur due to seasonal climatic changes. Groundwater pumping may also result in seasonal and long-term drawdown.

**fractured rock** means sedimentary, igneous and metamorphic rocks with fractures, joints, bedding planes and cavities in the rock mass that are capable of transmitting water.

**full capacity** means the volume of water that is impounded in the pool, lagoon or lake when the pool, lagoon or lake is at the level when a visible flow out of that pool, lagoon or lake would cease.

**grazeable area** means, for an individual landholding, the area of pasture in hectares for a pasture type that is accessible for stock grazing and able to grow appropriate vegetation for stock grazing, but does not include impervious surfaces (such as rocks or rocky terrain, man-made structures, mines or quarries) or other such surfaces that do not support grazing vegetation, such as water bodies and forested floors with no undergrowth.

**groundwater-dependent ecosystems** includes ecosystems which have their species composition and natural ecological processes wholly or partially determined by groundwater.

**individual daily extraction limits (IDELs)** is the volume of water that may be extracted by an individual access licence from an unregulated river on a daily basis from a particular flow class.

**in-river dam** means a dam located in a river.

**in-river dam pool** means the area of water immediately upstream of an in-river dam where the river has pooled as a result of an in-river dam.

**in-river pool** means a natural pool, lagoon or lake that is within a river or stream (regardless of stream size) and excludes:

- (a) a pool that is on a flood-runner or floodplain, or
- (b) a pool that is on an effluent that only begins to flow during high flows.

**Karst environment** means an area of land, including subterranean land, that has developed in soluble rock through the processes of solution, abrasion or collapse, together with its associated bedrock, soil, water, gases and biodiversity.

**Logbook**, in relation to an access licence or water supply work approval, means a written record, kept in hard copy or electronic form, that accurately records all information required to be kept in relation to the access licence or water supply work approval under the rules of this Plan.

**management zone** is an area within a water source in which rules particular to that management zone will apply, for example daily extraction limits and restrictions on dealings.

**mangrove limit** is defined in the document prepared by the Manly Hydraulic Laboratory entitled *Survey of Tidal Limits and Mangrove Limits in NSW estuaries 1996 to 2005*, ISBN 0-7347-4302-5 (NSW Department of Natural Resources, Manly Hydraulics Laboratory).

**Minimum Construction Requirements for Water Bores in Australia** means the document published by the National Uniform Drillers Licensing Committee entitled *Minimum Construction Requirements for Water Bores in Australia, 2003*, ISBN 978-0-646-56917-8.

**off-river pool** means a natural pool, lagoon or lake that is:

- (a) not within a river or stream (regardless of stream size), or
- (b) located on a flood-runner or floodplain, or
- (c) located on an effluent that only commences to flow during high flows.

**porous rock** means consolidated sedimentary rock containing voids, pores or other openings (such as joints, cleats and/or fractures) which are interconnected, in the rock mass and which are capable of transmitting water.

**recharge** means the addition of water, usually by infiltration, to an aquifer.

**runoff harvesting dam** means a dam on a hillside or minor stream which collects and stores rainfall runoff. Minor streams are defined in harvestable rights orders made under section 54 of the Act. For the purposes of this Plan, references to runoff harvesting dams as water supply works include any associated pumps or other works which take water from the dam. For the purpose of clarity, this definition includes dams that are also used to store water diverted into the dam from a river or other source of water.

**sand formations** means a succession of small loose grains of sand, often made of quartz.

**shepherding** means the delivery of a calculated volume of water that was created by the non-activation/reduced extraction at a nominated licence location to a more downstream location, after consideration of losses, where it will be made available for extraction or use for the environment.

**total daily extraction limits (TDELs)** is the volume of water that may be extracted under access licences from an unregulated river on a daily basis from a particular flow class.

**trading zone** is an area within a water source established under clause 61 of this Plan and shown on [the Plan Map](#), to which restrictions on dealings apply.

**visible flow** means the continuous downstream movement of water that is perceptible to the eye.

**Water Act 1912 entitlement** has the same meaning as **entitlement** has in clause 2 of Schedule 10 to the Act.

**Year 1 of this Plan** means from the date of 1 July 2016 to 30 June 2017.

**Year 2 of this Plan** means from the date of 1 July 2017 to 30 June 2018.

**Year 4 of this Plan** means from the date of 1 July 2019 to 30 June 2020.

**Year 5 of this Plan** means from the date of 1 July 2020 to 30 June 2021.

**Year 6 of this Plan** means from the date of 1 July 2021 to 30 June 2022.

**Year 7 of this Plan** means from the date of 1 July 2022 to 30 June 2023.

## Schedule 1 Access licences subject to the cease to take conditions specified in clause 47 (7)

The access licences which replace *Water Act 1912* entitlements listed in Column 1 of the table below and which have share components that specify the water sources listed in Column 2 of the table below, will have the access rule specified in Column 3 imposed as mandatory conditions to give effect to clause 47 (7).

Column 1	Column 2	Column 3
<i>Water Act 1912</i> entitlements that will be replaced by access licences on commencement of this Plan	Water Source	Access rules
30SL027592	Tia River Water Source	Water must not be taken when the water level at Tia River at Tia gauge (206009) falls below 0.38 metres
30SL035824	Chandler River Water Source	Water must not be taken when there is no flow in Sugarloaf Creek over the weir, located in the bed of Sugarloaf Creek downstream of the diversion channel, or when there is no flow in Sugarloaf Creek where it crosses the earthen boundary of Lot 14 DP 751461, Parish of Lagune, County of Clare.

## Schedule 2 Access rules for in-river dam pools

The access licences which replace *Water Act 1912* entitlements listed in Column 1 of the table below and which have share components that specify the water sources listed in Column 2 of the table below, will have the access rule specified in Column 3 imposed as mandatory conditions to give effect to clause 47 (9).

Column 1	Column 2	Column 3
<i>Water Act 1912</i> entitlements that will be replaced by access licences on commencement of this Plan	Water Source	Access rules
30SL011600	Gara River	Water must not be taken when the level of the water in the Gara Dam storage is lower than 1 m below the crest of the dam.
30SL065486	Gara River	Water must not be taken when the level of the water in the Gara Dam storage is lower than 1 m below the crest of the dam.
30SL066766	Gara River	Water must not be taken when the level of the water in the Gara Dam storage is lower than 1 m below the crest of the dam.

## **Schedule 3 Access licences used to take surface water exempt from cease to take rules**

### **1 General**

This clause applies to each access licence which replaces a *Water Act 1912* entitlement listed in the table below.

#### ***Water Act 1912* entitlements that will be replaced by access licences on commencement of this Plan**

30SL065675

30SL065675

30SL010921

30SL042192

30SL048918

30SL065629

30SL065668

30SL065709

30SL065755

30SL065851

30SL066219

30SL066265

30SL066379

30SL066416

30SL066443

30SL066457

30SL066468

30SL066469

30SL066631

30SL066677

30SL066765

### **2 Local water utility access licences and access licences of the subcategory “Town water supply”**

This clause applies to each access licence which replaces a *Water Act 1912* entitlement listed in the table below.

***Water Act 1912* entitlements that will be replaced by local water utility access licences or access licences of the subcategory “Town water supply” on commencement of this Plan**

**Note.** At the commencement of this Plan there are no access licences listed in clause 2 of this Schedule. Clause 82 (3) allows for this Plan to be amended to add access licences to this Schedule subject to the requirements in that clause.

### **3 Styx River Water Source**

This clause applies to each access licence which replaces a *Water Act 1912* entitlement listed in the table below:

***Water Act 1912* entitlements that will be replaced by access licences on commencement of this Plan**

30SL045829

## **Schedule 4 Contamination sources in these water sources**

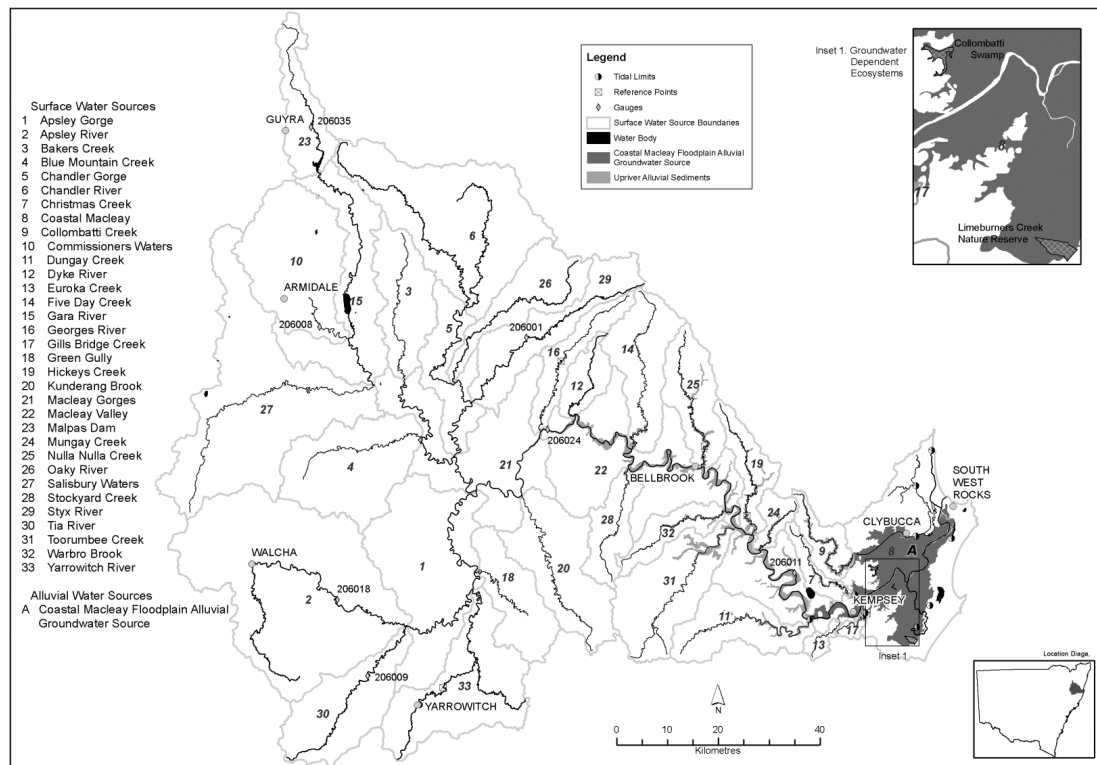
Contamination sources in these water sources comprise the following:

- (a) on-site sewage disposal systems or septic tanks,
- (b) any sites which have been declared to be significantly contaminated land under the *Contaminated Land Management Act 1997*,
- (c) any sites that are or have been the subject of an activity listed in Table 1 of the contaminated land planning guidelines published under the *Environmental Planning and Assessment Act 1979* from time to time.

## **Appendix 1 Overview of the Plan Map**

**Overview of the Plan Map (WSP031\_Version 1) Water Sharing Plan for the Macleay Unregulated and Alluvial Water Sources 2016**





## Appendix 2 Inspection of the Plan Map

Copies of the Plan Map may be inspected at the following offices:

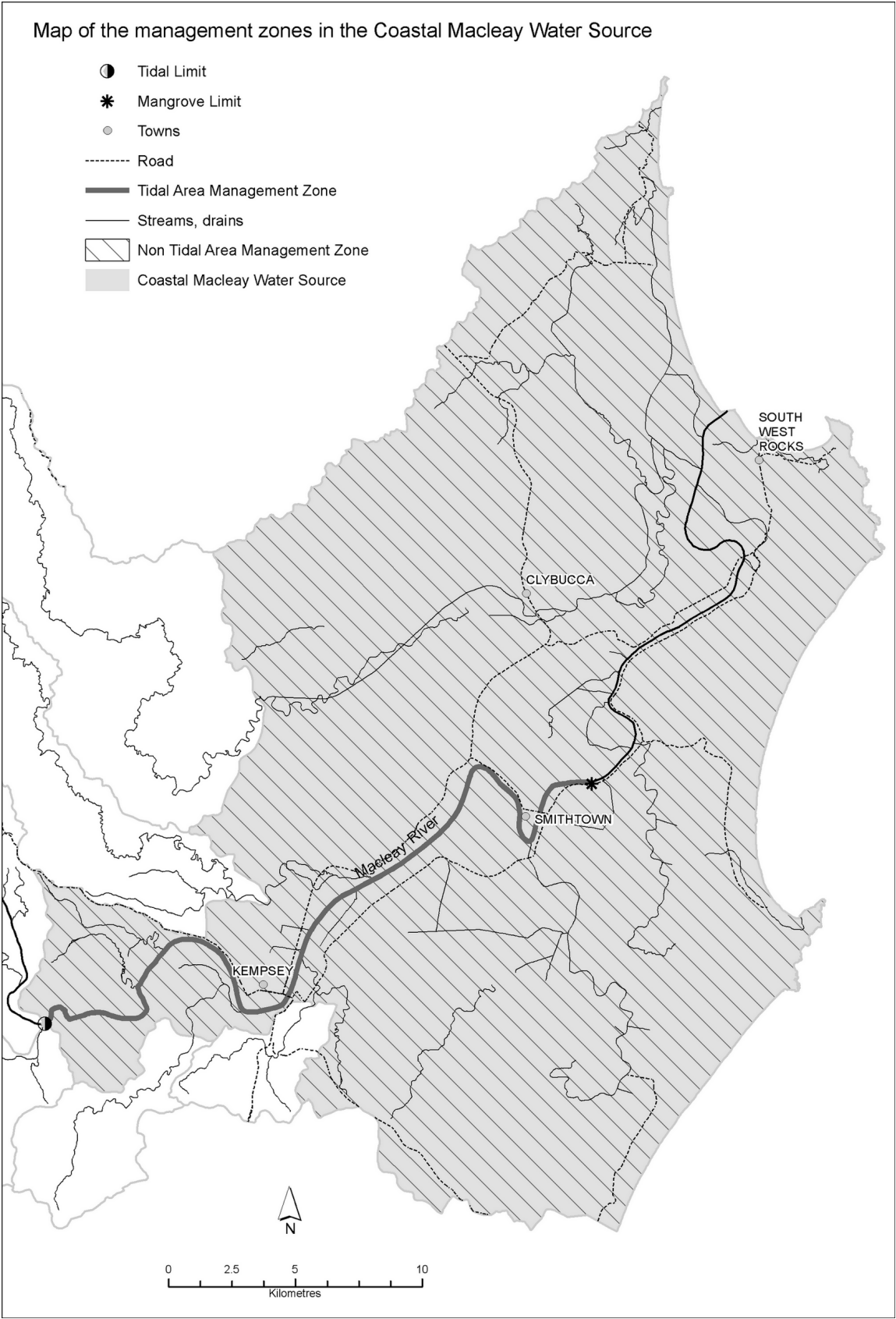
DPI Water  
10 Valentine Ave  
PARRAMATTA NSW 2150

DPI Water  
41 Belgrave St  
KEMPSEY NSW 2440

DPI Water  
120 Jessie St  
ARMIDALE NSW 2350

## Appendix 3 Overview map of the management zones in the Coastal Macleay Water Source

Overview map of the management zones in the Coastal Macleay Water Source in the [Water Sharing Plan for the Macleay Unregulated and Alluvial Water Sources 2016](#)



## **Appendix 4 Office**

Any notifications that may be required to be made to the Minister, as specified in this Plan can be made to the following office:

DPI Water  
49 Victoria St  
GRAFTON NSW 2460

## Historical notes

The following abbreviations are used in the Historical notes:

Am	amended	LW	legislation website	Sch	Schedule
Cl	clause	No	number	Schs	Schedules
ClI	clauses	p	page	Sec	section
Div	Division	pp	pages	Secs	sections
Divs	Divisions	Reg	Regulation	Subdiv	Subdivision
GG	Government Gazette	Regs	Regulations	Subdivs	Subdivisions
Ins	inserted	Rep	repealed	Subst	substituted

### Table of amending instruments

*Water Sharing Plan for the Macleay Unregulated and Alluvial Water Sources 2016 (385)*. LW 1.7.2016. Date of commencement, 1.7.2016, cl 3. This Plan has been amended as follows:

**2016** No 55 *Statute Law (Miscellaneous Provisions) Act (No 2) 2016*. Assented to 25.10.2016.  
Date of commencement of Sch 3.46, 6.1.2017, sec 2 (1).

### Table of amendments

Dictionary Am 2016 No 55, Sch 3.46.